

Debra Brown

From: Mike Samson <msamson@susacs.com>
Sent: Monday, September 27, 2021 12:10 PM
To: Jenny Emami
Cc: Commissioner Baughman; Commissioner Dallara; Commissioner Frederick
Subject: RE: Bedford County
Attachments: Bedford County Draft Audit 12-31-20.pdf

Hi Jenny,

Attached is a draft of the Bedford County 12-31-2020 financial statements. The county anticipates issuing audited financial statements in October. Could you e-mail me to let me know once all information has been uploaded to the MSRB website?

Thank You

Mike

From: Jenny Emami <JennyE@DACBond.com>
Sent: Friday, September 24, 2021 10:51 AM
To: Mike Samson <msamson@susacs.com>
Cc: Debra Brown (dbrown@bedfordcountypa.org) <dbrown@bedfordcountypa.org>; Commissioner Dallara <cdallara@bedfordcountypa.org>; Commissioner Frederick <CFrederick@bedfordcountypa.org>; Commissioner Baughman <dbaughman@bedfordcountypa.org>
Subject: RE: Bedford County

Awesome!!

Jenny

Jenny Emami
Direct - 407-515-1112
(Cell - [REDACTED])

From: Mike Samson [<mailto:msamson@susacs.com>]
Sent: Friday, September 24, 2021 9:40 AM
To: Jenny Emami <JennyE@DACBond.com>
Cc: Debra Brown (dbrown@bedfordcountypa.org) <dbrown@bedfordcountypa.org>; Commissioner Dallara <cdallara@bedfordcountypa.org>; Commissioner Frederick <CFrederick@bedfordcountypa.org>; Commissioner Baughman <dbaughman@bedfordcountypa.org>
Subject: RE: Bedford County

Hi Jenny,

I just touched base with our auditors and they will provide a draft of the county's f/s to me on Monday morning. I will forward the draft f/s to you then to upload to the website.

Thank You

Mike

From: Jenny Emami <JennyE@DACBond.com>
Sent: Friday, September 24, 2021 9:16 AM
To: Mike Samson <msamson@susacs.com>
Cc: Debra Brown (dbrown@bedfordcountypa.org) <dbrown@bedfordcountypa.org>; Commissioner Dallara <cdallara@bedfordcountypa.org>; Commissioner Frederick <CFrederick@bedfordcountypa.org>; Commissioner Baughman <dbaughman@bedfordcountypa.org>
Subject: RE: Bedford County

Hi Mike,

I am checking in on the status of the audit. It is due to be filed by Monday 10pm.

IF the audit isn't available, you have the option to file a draft or Unaudited Financials or a Notice of Failure to Provide. Either way, the County will stay compliant.

Please let me know how we will proceed.

Thank you!

Jenny

Jenny Emami
Direct - 407-515-1112
(Cell - [REDACTED])

From: Mike Samson [mailto:msamson@susacs.com]
Sent: Friday, September 3, 2021 3:32 PM
To: Jenny Emami <JennyE@DACBond.com>
Cc: Debra Brown (dbrown@bedfordcountypa.org) <dbrown@bedfordcountypa.org>; Commissioner Dallara <cdallara@bedfordcountypa.org>; Commissioner Frederick <CFrederick@bedfordcountypa.org>; Commissioner Baughman <dbaughman@bedfordcountypa.org>
Subject: Bedford County

Hi Jenny,

I attached the completed excel spreadsheet and attached the 2021 budget. The audited financial statements have not been issued yet. I will forward them to you when they are issued. If you need anything else, please let me know.

Thank You

Mike

Mike Samson, CPA
Director
Susquehanna Accounting & Consulting Solutions, Inc.
(717) 561-8089 Ext. 5018

Debra Brown

From: Jenny Emami <JennyE@DACBond.com>
Sent: Monday, September 27, 2021 12:43 PM
To: Mike Samson
Cc: Commissioner Baughman; Commissioner Dallara; Commissioner Frederick
Subject: RE: Bedford County

Mike,

The draft has been filed on DAC and EMMA. We will continue to send reminders until the final audit has been filed as well.

Thank you!!

Jenny

Jenny Emami
Direct - 407-515-1112
Cell - [REDACTED]

From: Mike Samson [mailto:msamson@susacs.com]
Sent: Monday, September 27, 2021 12:10 PM
To: Jenny Emami <JennyE@DACBond.com>
Cc: Commissioner Baughman <dbaughman@bedfordcountypa.org>; Commissioner Dallara <cdallara@bedfordcountypa.org>; Commissioner Frederick <CFrederick@bedfordcountypa.org>
Subject: RE: Bedford County

Hi Jenny,

Attached is a draft of the Bedford County 12-31-2020 financial statements. The county anticipates issuing audited financial statements in October. Could you e-mail me to let me know once all information has been uploaded to the MSRB website?

Thank You

Mike

From: Jenny Emami <JennyE@DACBond.com>
Sent: Friday, September 24, 2021 10:51 AM
To: Mike Samson <msamson@susacs.com>
Cc: Debra Brown (dbrown@bedfordcountypa.org) <dbrown@bedfordcountypa.org>; Commissioner Dallara <cdallara@bedfordcountypa.org>; Commissioner Frederick <CFrederick@bedfordcountypa.org>; Commissioner Baughman <dbaughman@bedfordcountypa.org>
Subject: RE: Bedford County

Awesome!!

Jenny

Jenny Emami
Direct - 407-515-1112
(Cell - [REDACTED])

From: Mike Samson [mailto:msamson@susacs.com]
Sent: Friday, September 24, 2021 9:40 AM
To: Jenny Emami <JennyE@DACBond.com>
Cc: Debra Brown (dbrown@bedfordcountypa.org) <dbrown@bedfordcountypa.org>; Commissioner Dallara <cdallara@bedfordcountypa.org>; Commissioner Frederick <CFrederick@bedfordcountypa.org>; Commissioner Baughman <dbaughman@bedfordcountypa.org>
Subject: RE: Bedford County

Hi Jenny,

I just touched base with our auditors and they will provide a draft of the county's f/s to me on Monday morning. I will forward the draft f/s to you then to upload to the website.

Thank You

Mike

From: Jenny Emami <JennyE@DACBond.com>
Sent: Friday, September 24, 2021 9:16 AM
To: Mike Samson <msamson@susacs.com>
Cc: Debra Brown (dbrown@bedfordcountypa.org) <dbrown@bedfordcountypa.org>; Commissioner Dallara <cdallara@bedfordcountypa.org>; Commissioner Frederick <CFrederick@bedfordcountypa.org>; Commissioner Baughman <dbaughman@bedfordcountypa.org>
Subject: RE: Bedford County

Hi Mike,

I am checking in on the status of the audit. It is due to be filed by Monday 10pm.

IF the audit isn't available, you have the option to file a draft or Unaudited Financials or a Notice of Failure to Provide. Either way, the County will stay compliant.

Please let me know how we will proceed.

Thank you!

Jenny

Jenny Emami
Direct - 407-515-1112
(Cell - [REDACTED])

From: Mike Samson [mailto:msamson@susacs.com]
Sent: Friday, September 3, 2021 3:32 PM
To: Jenny Emami <JennyE@DACBond.com>

Cc: Debra Brown (dbrown@bedfordcountypa.org) <dbrown@bedfordcountypa.org>; Commissioner Dallara <cdallara@bedfordcountypa.org>; Commissioner Frederick <CFrederick@bedfordcountypa.org>; Commissioner Baughman <dbaughman@bedfordcountypa.org>

Subject: Bedford County

Hi Jenny,

I attached the completed excel spreadsheet and attached the 2021 budget. The audited financial statements have not been issued yet. I will forward them to you when they are issued. If you need anything else, please let me know.

Thank You

Mike

Mike Samson, CPA
Director
Susquehanna Accounting & Consulting Solutions, Inc.
(717) 561-8089 Ext. 5018

Debra Brown

From: Mike Samson <msamson@susacs.com>
Sent: Friday, October 1, 2021 9:16 AM
To: Commissioner Dallara; Commissioner Baughman; Commissioner Frederick
Cc: Tracey Snyder
Subject: Checks

Commissioners,

I just wanted to make you aware that as we completed our August 2021 bank reconciliation for the county's main disbursement account, we noted two checks that cleared in August of 2021 that had cleared in previous months. The checks were to the same vendor Genesis Clippinger C/O Children & Youth and is part of their program to pay the child if they maintain a certain grade level in school. The two checks are listed below:

1. Check number [REDACTED] check date 4/7/2021 in the amount of \$20.00 cleared initially on 5/5/2021 and then was cashed again on 8/11/2021
2. Check number [REDACTED] check date 6/24/2021 in the amount of \$20.00 cleared initially on 7/28/2021 and then was cashed again on 8/23/2021

I contacted Joyce at FNB and they are looking into the issue. Tracey noted the second time the checks were cashed was via remote deposit. Tracey will let C&Y know also. Once I hear back from the bank, I will let you know.

Mike

Mike Samson, CPA
Director
Susquehanna Accounting & Consulting Solutions, Inc.
(717) 561-8089 Ext. 5018

Debra Brown

From: Tracey Snyder
Sent: Friday, October 1, 2021 9:19 AM
To: Mike Samson; Commissioner Dallara; Commissioner Baughman; Commissioner Frederick
Subject: RE: Checks

Good morning,

I just spoke with Stacie in CYS and Genisis has since moved and she is unsure if she is still in the state. She is going to contact Bobbi Howsare who deals with her and see if there is contact information. Stacie will make everyone aware of the situation in CYS that needs to know. Upon looking at it she was doing mobile deposits at different banks it looks like then also cashing them at other banks.

Thanks,

Tracey Snyder, Assistant Director of Finance
200 South Juliana Street ~ Suite 302
Bedford, PA 15522
Email: tsnyder@bedfordcountypa.org
Phone: 814-623-4807 ext 2610
Fax: 814-623-0991



From: Mike Samson <msamson@susacs.com>
Sent: Friday, October 1, 2021 9:16 AM
To: Commissioner Dallara <cdallara@bedfordcountypa.org>; Commissioner Baughman <dbaughman@bedfordcountypa.org>; Commissioner Frederick <CFrederick@bedfordcountypa.org>
Cc: Tracey Snyder <tsnyder@bedfordcountypa.org>
Subject: Checks

Commissioners,

I just wanted to make you aware that as we completed our August 2021 bank reconciliation for the county's main disbursement account, we noted two checks that cleared in August of 2021 that had cleared in previous months. The checks were to the same vendor Genesis Clippinger C/O Children & Youth and is part of their program to pay the child if they maintain a certain grade level in school. The two checks are listed below:

1. Check number [REDACTED] check date 4/7/2021 in the amount of \$20.00 cleared initially on 5/5/2021 and then was cashed again on 8/11/2021

2. Check number [REDACTED] check date 6/24/2021 in the amount of \$20.00 cleared initially on 7/28/2021 and then was cashed again on 8/23/2021

I contacted Joyce at FNB and they are looking into the issue. Tracey noted the second time the checks were cashed was via remote deposit. Tracey will let C&Y know also. Once I hear back from the bank, I will let you know.

Mike

Mike Samson, CPA
Director
Susquehanna Accounting & Consulting Solutions, Inc.
(717) 561-8089 Ext. 5018



Debra Brown

From: Commissioner Frederick
Sent: Monday, October 4, 2021 12:02 PM
To: Joy Lepako
Subject: FW: Checks

From: Tracey Snyder <tsnyder@bedfordcountypa.org>
Sent: Friday, October 1, 2021 9:19 AM
To: Mike Samson <msamson@susacs.com>; Commissioner Dallara <cdallara@bedfordcountypa.org>; Commissioner Baughman <dbaughman@bedfordcountypa.org>; Commissioner Frederick <CFrederick@bedfordcountypa.org>
Subject: RE: Checks

Good morning,

I just spoke with Stacie in CYS and Genisis has since moved and she is unsure if she is still in the state. She is going to contact Bobbi Howsare who deals with her and see if there is contact information. Stacie will make everyone aware of the situation in CYS that needs to know. Upon looking at it she was doing mobile deposits at different banks it looks like then also cashing them at other banks.

Thanks,

*Tracey Snyder, Assistant Director of Finance
200 South Juliana Street ~ Suite 302
Bedford, PA 15522
Email: tsnyder@bedfordcountypa.org
Phone: 814-623-4807 ext 2610
Fax: 814-623-0991*



From: Mike Samson <msamson@susacs.com>
Sent: Friday, October 1, 2021 9:16 AM
To: Commissioner Dallara <cdallara@bedfordcountypa.org>; Commissioner Baughman <dbaughman@bedfordcountypa.org>; Commissioner Frederick <CFrederick@bedfordcountypa.org>
Cc: Tracey Snyder <tsnyder@bedfordcountypa.org>
Subject: Checks

Commissioners,

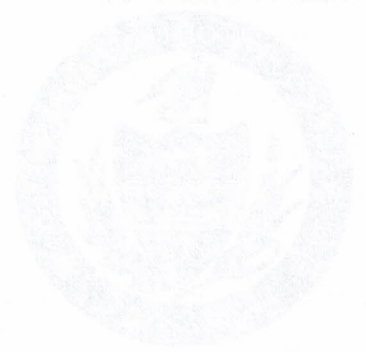
I just wanted to make you aware that as we completed our August 2021 bank reconciliation for the county's main disbursement account, we noted two checks that cleared in August of 2021 that had cleared in previous months. The checks were to the same vendor Genesis Clippinger C/O Children & Youth and is part of their program to pay the child if they maintain a certain grade level in school. The two checks are listed below:

1. Check number [REDACTED] check date 4/7/2021 in the amount of \$20.00 cleared initially on 5/5/2021 and then was cashed again on 8/11/2021
2. Check number [REDACTED] check date 6/24/2021 in the amount of \$20.00 cleared initially on 7/28/2021 and then was cashed again on 8/23/2021

I contacted Joyce at FNB and they are looking into the issue. Tracey noted the second time the checks were cashed was via remote deposit. Tracey will let C&Y know also. Once I hear back from the bank, I will let you know.

Mike

Mike Samson, CPA
Director
Susquehanna Accounting & Consulting Solutions, Inc.
(717) 561-8089 Ext. 5018



Debra Brown

From: Mike Samson <msamson@susacs.com>
Sent: Tuesday, October 5, 2021 11:29 AM
To: Melissa Cottle
Cc: Commissioner Baughman; Commissioner Frederick; Commissioner Dallara
Subject: Transfer

Hi Melissa,

Could you transfer \$600,000 from the general fund money market account to the general fund checking account to cover this week's payroll and other expenses.

Thank You

Mike

Mike Samson, CPA
Director
Susquehanna Accounting & Consulting Solutions, Inc.
(717) 561-8089 Ext. 5018

Debra Brown

From: Debra Brown
Sent: Friday, October 8, 2021 10:45 AM
To: Corey Troutman
Cc: Commissioner Baughman; Commissioner Frederick; Commissioner Dallara
Subject: RE: teleconference call

Corey:

Could we please look at Friday morning, the 15th at 9:30 or 10:00 a.m.?

Deb

From: Corey Troutman <ctroutman@susacs.com>
Sent: Friday, October 8, 2021 9:16 AM
To: Debra Brown <DBrown@bedfordcountypa.org>
Cc: Commissioner Baughman <dbaughman@bedfordcountypa.org>
Subject: RE: teleconference call

Deb,

Apologies for the delay in response. I will be working on the 11th, I have budget meetings scheduled on another client on Tuesday, Wednesday, and Thursday. It looks like I could probably do a call after 3:30 on Tuesday or 4:30 on Wednesday/Thursday. On Wednesday/Thursday, I could also probably do a short call at 8:00 if that would work. If none of those times work, I could be flexible on Friday.

Let me know what is best for everyone else.

Corey A. Troutman, CPA, CGMA, CITP
Managing Shareholder
Susquehanna Accounting & Consulting Solutions, Inc.
830 Sir Thomas Court, Suite 150
Harrisburg, PA 17109
Office: 717-561-8089 ext. 5080
Mobile: [REDACTED]

From: Debra Brown <DBrown@bedfordcountypa.org>
Sent: Monday, October 4, 2021 7:44 AM
To: Corey Troutman <ctroutman@susacs.com>
Cc: Commissioner Baughman <dbaughman@bedfordcountypa.org>
Subject: RE: teleconference call

Hi Corey:

It was decided to wait until Commissioner Dallara returns; what does your schedule look like the week of the 11th? The 11th is a holiday, but any time after?

Deb

From: Corey Troutman <ctroutman@susacs.com>

Sent: Friday, October 1, 2021 4:22 PM

To: Debra Brown <DBrown@bedfordcountypa.org>

Cc: Commissioner Baughman <dbaughman@bedfordcountypa.org>; Commissioner Frederick <CFrederick@bedfordcountypa.org>

Subject: Re: teleconference call

Debra,

I can do a call anytime after 10:30 on Monday or on Tuesday morning.

Let me know what works best for everyone else.

Corey

Sent from my iPhone

On Oct 1, 2021, at 11:25 AM, Debra Brown <DBrown@bedfordcountypa.org> wrote:

Hi Corey:

The commissioners would like to set up a conference call one day next week for approximately 15 – 20 minutes. Please let me know, thanks.

Deb

Debra Brown, Chief Clerk/Director of Elections

200 South Juliana Street ~ Suite 301

Bedford, PA 15522

Email: dbrown@bedfordcountypa.org

Phone: 814-623-4807

Fax: 814-623-0991

Debra Brown

From: Corey Troutman <ctroutman@susacs.com>
Sent: Friday, October 8, 2021 10:48 AM
To: Debra Brown
Cc: Commissioner Baughman; Commissioner Frederick; Commissioner Dallara
Subject: RE: teleconference call

I can be available at either time.

Corey A. Troutman, CPA, CGMA, CITP
Managing Shareholder
Susquehanna Accounting & Consulting Solutions, Inc.
830 Sir Thomas Court, Suite 150
Harrisburg, PA 17109
Office: 717-561-8089 ext. 5080
Mobile: [REDACTED]

From: Debra Brown <DBrown@bedfordcountypa.org>
Sent: Friday, October 8, 2021 10:45 AM
To: Corey Troutman <ctroutman@susacs.com>
Cc: Commissioner Baughman <dbaughman@bedfordcountypa.org>; Commissioner Frederick <CFrederick@bedfordcountypa.org>; Commissioner Dallara <cdallara@bedfordcountypa.org>
Subject: RE: teleconference call
Importance: High

Corey:

Could we please look at Friday morning, the 15th at 9:30 or 10:00 a.m.?

Deb

From: Corey Troutman <ctroutman@susacs.com>
Sent: Friday, October 8, 2021 9:16 AM
To: Debra Brown <DBrown@bedfordcountypa.org>
Cc: Commissioner Baughman <dbaughman@bedfordcountypa.org>
Subject: RE: teleconference call

Deb,

Apologies for the delay in response. I will be working on the 11th, I have budget meetings scheduled on another client on Tuesday, Wednesday, and Thursday. It looks like I could probably do a call after 3:30 on Tuesday or 4:30 on Wednesday/Thursday. On Wednesday/Thursday, I could also probably do a short call at 8:00 if that would work. If none of those times work, I could be flexible on Friday.

Let me know what is best for everyone else.

Corey A. Troutman, CPA, CGMA, CITP
Managing Shareholder
Susquehanna Accounting & Consulting Solutions, Inc.
830 Sir Thomas Court, Suite 150

Harrisburg, PA 17109
Office: 717-561-8089 ext. 5080
Mobile: [REDACTED]

From: Debra Brown <DBrown@bedfordcountypa.org>
Sent: Monday, October 4, 2021 7:44 AM
To: Corey Troutman <ctroutman@susacs.com>
Cc: Commissioner Baughman <dbaughman@bedfordcountypa.org>
Subject: RE: teleconference call

Hi Corey:

It was decided to wait until Commissioner Dallara returns; what does your schedule look like the week of the 11th? The 11th is a holiday, but any time after?

Deb

From: Corey Troutman <ctroutman@susacs.com>
Sent: Friday, October 1, 2021 4:22 PM
To: Debra Brown <DBrown@bedfordcountypa.org>
Cc: Commissioner Baughman <dbaughman@bedfordcountypa.org>; Commissioner Frederick <CFrederick@bedfordcountypa.org>
Subject: Re: teleconference call

Debra,

I can do a call anytime after 10:30 on Monday or on Tuesday morning.

Let me know what works best for everyone else.

Corey

Sent from my iPhone

On Oct 1, 2021, at 11:25 AM, Debra Brown <DBrown@bedfordcountypa.org> wrote:

Hi Corey:

The commissioners would like to set up a conference call one day next week for approximately 15 – 20 minutes. Please let me know, thanks.

Deb

*Debra Brown, Chief Clerk/Director of Elections
200 South Juliana Street ~ Suite 301
Bedford, PA 15522
Email: dbrown@bedfordcountypa.org
Phone: 814-623-4807
Fax: 814-623-0991*

Debra Brown

From: Bedford Finance
Sent: Wednesday, October 13, 2021 3:36 PM
To: msamson@susacs.com; Commissioners
Subject: FW: Supply Request

From: Wayne Emerick <wemerick@bedfordcountypa.org>
Sent: Wednesday, October 13, 2021 3:26 PM
To: Bedford Finance <Finance@bedfordcountypa.org>
Subject: RE: Supply Request

Hi Tracy not sure why ammo can't be placed under capital outlay I purchased ammo last year under capital outlay? But thanks for passing this on 😊

From: Bedford Finance <Finance@bedfordcountypa.org>
Sent: Wednesday, October 13, 2021 3:17 PM
To: Wayne Emerick <wemerick@bedfordcountypa.org>
Cc: William Decourcy <wdecourcy@bedfordcountypa.org>
Subject: RE: Supply Request

Good afternoon,

Thank you for the quick response, I have sent this to Mike Samson for him to pull these reports so I can pass them along to you.

Attached is what we were showing as of 10/08/21 and the ammunition can not be placed under capital outlay. I also have asked him to look into the \$2116 being Covid costs, as Susquehanna handled that for the county. As soon as I have information for you I will pass it along.

Tracey

From: Wayne Emerick <wemerick@bedfordcountypa.org>
Sent: Wednesday, October 13, 2021 3:07 PM
To: Bedford Finance <Finance@bedfordcountypa.org>
Cc: William Decourcy <wdecourcy@bedfordcountypa.org>
Subject: RE: Supply Request

Good afternoon Tracy, could you please forward me a copy of the Third quarterly report. According to the last report my office had, there was \$8995. In Capital Outlay left and \$7800 in Material & Supplies. So Could you please forward the report so I can see what was spent. Also I was informed that the K-Log chairs we purchased in May for \$2116. Which was charged to my Materials & Supplies was to be purchased under the Covid money? So could you please check on that for me, and let me review the 3rd quarterly report to make sure of the accuracy. As far as upcoming anticipated expenses I see some general office supplies and some vehicle maintenance as of now, and some uniform purchase yet for Two new hires I have coming. Thanks Sheriff

From: Bedford Finance <Finance@bedfordcountypa.org>
Sent: Wednesday, October 13, 2021 1:42 PM
To: William Decourcy <wdecourcy@bedfordcountypa.org>
Cc: Linda Klotz <lklotz@bedfordcountypa.org>; Wayne Emerick <wemerick@bedfordcountypa.org>
Subject: RE: Supply Request

Good afternoon,

Upon looking at the budget and receiving the supply request for the Ammunition to be purchased from Atlantic Tactical, I was informed that the Sheriff's office is currently \$2600 over budget excluding salary and wages. Could you please provide more information on this supply request, as to when you need it by, is it an emergency, and what other upcoming expenditures you anticipate having until the end of the year?

Thank you in advance,

Tracey

From: William Decourcy <wdecourcy@bedfordcountypa.org>
Sent: Thursday, September 30, 2021 2:36 PM
To: Bedford Finance <Finance@bedfordcountypa.org>
Cc: Linda Klotz <lklotz@bedfordcountypa.org>; Wayne Emerick <wemerick@bedfordcountypa.org>
Subject: Supply Request

Finance, supply request attached.

Chief Deputy William DeCourcy
Bedford County Sheriff's Office
200 South Juliana St.
Bedford, PA 15522
Phone : (814)-623-2910 Ext:2156
Fax : (814)-623-2940



PRIVILEGED AND CONFIDENTIAL COMMUNICATION

This message is intended only for the use of the individual or entity to which it is addressed and may contain information that is confidential. If the reader of this message is not the intended recipient, or the employee or agent responsible for delivering the message to the intended recipient, you are hereby notified that any dissemination, distribution or copying of this communication is strictly prohibited. If you have received this communication in error, please immediately notify the sender and then delete the communication from your electronic mail system.

Debra Brown

From: Mike Samson <msamson@susacs.com>
Sent: Wednesday, October 20, 2021 10:46 AM
To: Melissa Cottle
Cc: Tracey Snyder; Commissioner Dallara; Commissioner Frederick; Commissioner Baughman
Subject: Transfer

Hi Melissa,

Could you transfer \$600,000 from the General Fund Money Market to the General Fund Checking Account to cover this week's payroll and other expenses?

Thank You

Mike

Mike Samson, CPA
Director
Susquehanna Accounting & Consulting Solutions, Inc.
(717) 561-8089 Ext. 5018

Debra Brown

From: Commissioner Dallara
Sent: Wednesday, October 20, 2021 12:46 PM
To: Bette Slayton; Commissioner Baughman; Commissioner Frederick
Subject: Fwd: DCED Strategic Management Planning Program
Attachments: StrategicManagementPlanningProgram-FactSheet_2020.pdf

As we discussed

Sent from my iPhone

Begin forwarded message:

From: Corey Troutman <ctroutman@susacs.com>
Date: October 20, 2021 at 11:17:33 AM EDT
To: Commissioner Dallara <cdallara@bedfordcountypa.org>
Cc: Mike Samson <msamson@susacs.com>
Subject: DCED Strategic Management Planning Program

Barry,

Following is the link to the above referenced program that we discussed yesterday at our meeting.

[Strategic Management Planning Program \(STMP\) - PA Department of Community & Economic Development](#)

Attached is the program fact sheet, Bedford County falls into the Southwest Region. The contacts for your region are Terri Cunkle and Michael Foreman (their contact information is at the bottom of the second page). The application would be completed on-line.

Let me know if you would like to discuss further.

Corey A. Troutman, CPA, CGMA, CITP
Managing Shareholder
Susquehanna Accounting & Consulting Solutions, Inc.
830 Sir Thomas Court, Suite 150
Harrisburg, PA 17109
Office: 717-561-8089 ext. 5080
Mobile: [REDACTED]

Debra Brown

From:
Sent:
To:
Subject:
Attachment:

Attachment: [Redacted]
From: [Redacted]
Sent: [Redacted]
To: [Redacted]
Subject: [Redacted]

As we discussed

Best from me,

Debra

From: [Redacted]
Sent: [Redacted]
To: [Redacted]
Subject: [Redacted]

Best,

Following is the link to the above referenced program that we discussed previously. It is available for all users.

Historic program: [\[Redacted\]](#)
Details: [\[Redacted\]](#)

Attached to this program are the program and user manuals. The manuals for your region are located in the folder named "User Manual" and the manual for the second region is located in the folder named "User Manual - Region 2".

Let me know if you would like to discuss further.

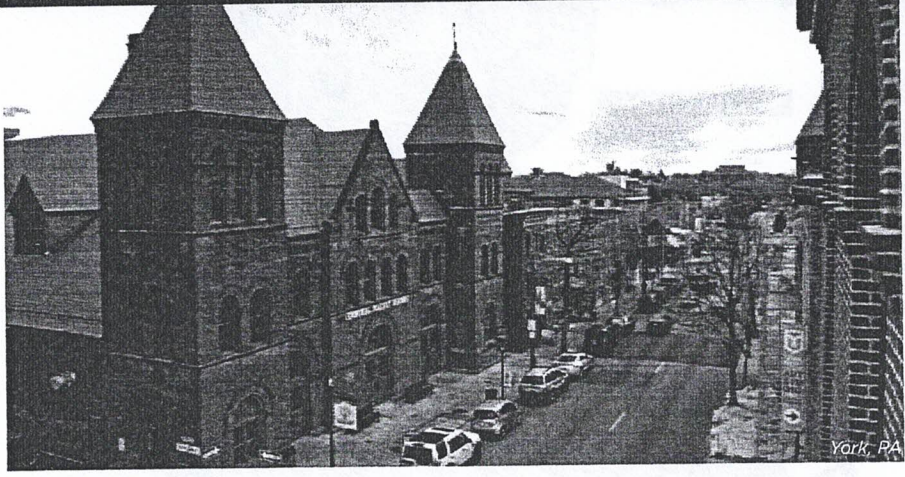
Debra A. Brown, CPA, CMA, CITP
Manager, Accounting & Reporting Solutions
833 St. James Court, Suite 200
Harrisburg, PA 17103
Office: 717.634.4000 ext. 3000

Debra



STRATEGIC MANAGEMENT PLANNING PROGRAM (STMP)

BUILDING FISCALLY STRONG COMMUNITIES



IMPROVING MUNICIPAL FISCAL POSITIONS THROUGH:

- The development, adoption, and implementation of Multi-Year Financial Management Plans.
- Professional consultant services to assist a municipality in the adoption and implementation of Multi-Year Financial Management Plans or related municipal financial and management initiatives and improvements.
- The development of related studies, including an audit as required by GCLGS guidelines, to improve the management practices and/or financial administration procedures of the local government.
- The development of multi-municipal or regional intergovernmental cooperation initiatives and cost sharing strategies.
- Implementation activities recommended within the adopted STMP report.
- Training and capacity building activities that meet basic requirements to assist in the implementation of the plan recommendations.
- Contracts with professional services consultants to develop and implement recommendations related to eligible activities contained in an adopted STMP report.

The Strategic Management Planning Program (STMP) offers tools and consultant services to improve a municipality's managerial, administrative, and financial capacity. Through the program, local officials learn how to effectively manage municipal finances through open, transparent, and pro-active fiscal planning.

Through STMP, local officials work with consultants to create short and long-term financial, managerial, and economic development strategies for the municipality. A 3 to 5-year financial plan, management review, and recommendations are submitted to the municipality in a final report.

WHO'S ELIGIBLE?

Pennsylvania counties, cities, boroughs, towns, townships, and home rule municipalities may apply to participate in STMP.

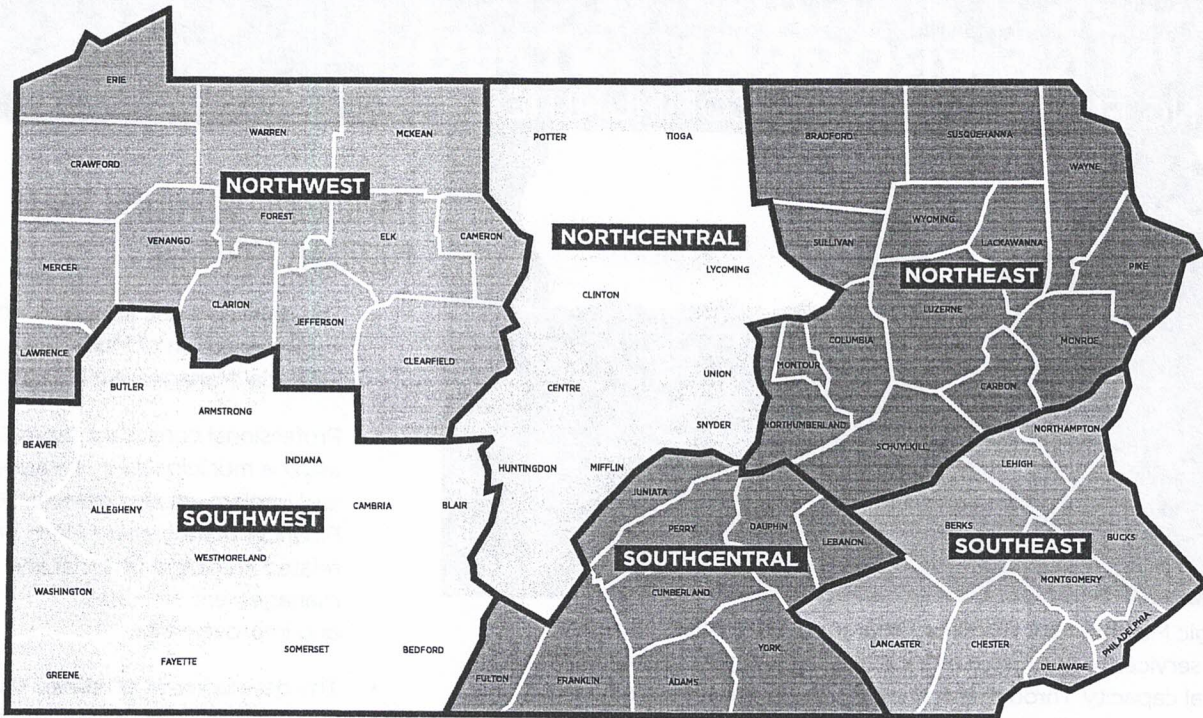
SERVICES

STMP includes grant funding (up to \$200,000) to support the hiring of independent financial consultants. Grant applications require a 50/50 local match. Reduced local cash matches may be considered based on financial hardship. Full guidelines and application details are available at dced.pa.gov/STMP.

STMP funding can be used for professional consultant services supporting the development, adoption, and implementation of:

- Multi-Year Financial Management Plans
- Improved management practices and/or financial administration procedures
- Multi-municipal or regional intergovernmental cooperation initiatives and cost sharing strategies
- Other activities recommended in the plan, including training for local officials

STRATEGIC MANAGEMENT PLANNING PROGRAM



ADDITIONAL PLANNING ASSISTANCE

The Governor's Center for Local Government Services provides technical assistance on a variety of planning, land use, and development matters to planning commissions, zoning officers, zoning hearing boards, and other local government officials. For more information visit dced.pa.gov/planning.

Governor's Center for Local Government Services

Commonwealth Keystone Building
400 North Street, 4th Floor
Harrisburg, PA 17120-0225

Tel: 1.888.223.6837
Email: ra-dcedclgs@pa.gov

Northwest Region

Terri Cunkle
412-584-6416

Michael Foreman
412-565-5199

Southwest Region

Terri Cunkle
412-584-6416

Michael Foreman
412-565-5199

Northcentral Region

Beverly Hutzal
717-720-7323

Jim Rose
570-963-4166

Southcentral Region

Anne Morrow
717-231-5558

Fred Chapman
717-720-7396

Northeast Region

Jim Rose
570-963-4166

Beverly Hutzal
717-720-7323

Mike Carpenter
717-975-7143

Southeast Region

Fred Chapman
717-720-7396

Anne Morrow
717-231-5558

Debra Brown

From: Bette Slayton <bslayton@bcda.org>
Sent: Thursday, October 21, 2021 8:14 AM
To: Commissioner Dallara; Commissioner Baughman; Commissioner Frederick
Subject: RE: DCED Strategic Management Planning Program

Thanks.....will sink our teeth into this in the next couple of days!

From: Commissioner Dallara <cdallara@bedfordcountypa.org>
Sent: Wednesday, October 20, 2021 12:46 PM
To: Bette Slayton <bslayton@bcda.org>; Commissioner Baughman <dbaughman@bedfordcountypa.org>; Commissioner Frederick <CFrederick@bedfordcountypa.org>
Subject: Fwd: DCED Strategic Management Planning Program

As we discussed

Sent from my iPhone

Begin forwarded message:

From: Corey Troutman <ctroutman@susacs.com>
Date: October 20, 2021 at 11:17:33 AM EDT
To: Commissioner Dallara <cdallara@bedfordcountypa.org>
Cc: Mike Samson <msamson@susacs.com>
Subject: DCED Strategic Management Planning Program

Barry,

Following is the link to the above referenced program that we discussed yesterday at our meeting.

[Strategic Management Planning Program \(STMP\) - PA Department of Community & Economic Development](#)

Attached is the program fact sheet, Bedford County falls into the Southwest Region. The contacts for your region are Terri Cunkle and Michael Foreman (their contact information is at the bottom of the second page). The application would be completed on-line.

Let me know if you would like to discuss further.

Corey A. Troutman, CPA, CGMA, CITP
Managing Shareholder
Susquehanna Accounting & Consulting Solutions, Inc.
830 Sir Thomas Court, Suite 150
Harrisburg, PA 17109
Office: 717-561-8089 ext. 5080
Mobile: [REDACTED]

Debra Brown

From: Tracey Snyder
Sent: Monday, October 25, 2021 4:21 PM
To: Commissioner Dallara
Subject: FW: Supply Request
Attachments: Budget to actual Sheriff October 2021.xlsx

Here is all the email communication from where I asked for in writing for the ammunition to Mike Samson's response to him.

Below is email I sent to him on March 2 that he received \$5000 per MC not the \$9000.

Mike Samson was looking into this vest program and also I have to ask him to move the chair allotment to capital outlay when he is in tomorrow.

Thanks,

Tracey

On Mar 2, 2021, at 9:31 AM, Tracey Snyder <tsnyder@bedfordcountypa.org> wrote:

Good morning,

Mike called in this morning and I checked with him on the VEST Program for the Sheriff. He said he had worked with Mark Miller on it and it was set up last September. He said it was approved for around \$5000.00 (he said that is an estimate off the top of his head). He did know they had put in for \$9000.00 and was approved for less. He said Mark was aware and knew it was approved.

Thanks,

Tracey Snyder, Assistant Director of Finance

Tracey Snyder, Assistant Director of Finance

200 South Juliana Street ~ Suite 302

Bedford, PA 15522

Email: tsnyder@bedfordcountypa.org

Phone: 814-623-4807 ext 2610

Fax: 814-623-0991



From: Mike Samson <msamson@susacs.com>
Sent: Wednesday, October 13, 2021 4:52 PM
To: Wayne Emerick <wemerick@bedfordcountypa.org>
Cc: Tracey Snyder <tsnyder@bedfordcountypa.org>
Subject: RE: Supply Request

Hi Wayne,

I attached an excel document with the requested information. The first tab is the budget to actual expenses for your department and the second tab lists the detailed expenses.

I will have to look at the invoice for the \$2,116 purchase to see if it can be paid for with covid funds and I will have to look into the grant for the vest also.

Mike

From: Wayne Emerick <wemerick@bedfordcountypa.org>
Sent: Wednesday, October 13, 2021 3:43 PM
To: Bedford Finance <Finance@bedfordcountypa.org>
Subject: RE: Supply Request

Hi Tracy, also we should have \$8000. Dollars in a grant for bulletproof vest that my office applied for and was approved by the vest grant and Mike Clapper was to handled his part of that. This money was to be applied to my uniform budget for this year and it has not been done. So you might want to look over that, to see if he followed thru with it. Also could you please get me the full breakdown of my budget, so I can look over what was purchased. Thanks again. Wayne

From: Bedford Finance <Finance@bedfordcountypa.org>
Sent: Wednesday, October 13, 2021 3:17 PM
To: Wayne Emerick <wemerick@bedfordcountypa.org>
Cc: William Decourcy <wdecourcy@bedfordcountypa.org>
Subject: RE: Supply Request

Good afternoon,

Thank you for the quick response, I have sent this to Mike Samson for him to pull these reports so I can pass them along to you.

Attached is what we were showing as of 10/08/21 and the ammunition can not be placed under capital outlay. I also have asked him to look into the \$2116 being Covid costs, as Susquehanna handled that for the county. As soon as I have information for you I will pass it along.

Tracey

From: Wayne Emerick <wemerick@bedfordcountypa.org>
Sent: Wednesday, October 13, 2021 3:07 PM
To: Bedford Finance <Finance@bedfordcountypa.org>
Cc: William Decourcy <wdecourcy@bedfordcountypa.org>
Subject: RE: Supply Request

Good afternoon Tracy, could you please forward me a copy of the Third quarterly report. According to the last report my office had, there was \$8995. In Capital Outlay left and \$7800 in Material & Supplies. So Could you please forward the report so I can see what was spent. Also I was informed that the K-Log chairs we purchased in May for \$2116. Which was charged to my Materials & Supplies was to be purchased under the Covid money? So could you please check on that for me, and let me review the 3rd quarterly report to make sure of the accuracy. As far as upcoming anticipated expenses I see some general office supplies and some vehicle maintenance as of now, and some uniform purchase yet for Two new hires I have coming. Thanks Sheriff

From: Bedford Finance <Finance@bedfordcountypa.org>
Sent: Wednesday, October 13, 2021 1:42 PM
To: William Decourcy <wdecourcy@bedfordcountypa.org>
Cc: Linda Klotz <lklotz@bedfordcountypa.org>; Wayne Emerick <wemerick@bedfordcountypa.org>
Subject: RE: Supply Request

Good afternoon,

Upon looking at the budget and receiving the supply request for the Ammunition to be purchased from Atlantic Tactical, I was informed that the Sheriff's office is currently \$2600 over budget excluding salary and wages. Could you please provide more information on this supply request, as to when you need it by, is it an emergency, and what other upcoming expenditures you anticipate having until the end of the year?

Thank you in advance,

Tracey

From: William Decourcy <wdecourcy@bedfordcountypa.org>
Sent: Thursday, September 30, 2021 2:36 PM
To: Bedford Finance <Finance@bedfordcountypa.org>
Cc: Linda Klotz <lklotz@bedfordcountypa.org>; Wayne Emerick <wemerick@bedfordcountypa.org>
Subject: Supply Request

Finance, supply request attached.

Chief Deputy William DeCourcy
Bedford County Sheriff's Office
200 South Juliana St.
Bedford, PA 15522
Phone : (814)-623-2910 Ext:2156
Fax : (814)-623-2940



PRIVILEGED AND CONFIDENTIAL COMMUNICATION

This message is intended only for the use of the individual or entity to which it is addressed and may contain information that is confidential. If the reader of this message is not the intended recipient, or the employee or agent responsible for delivering the message to the intended recipient, you are hereby notified that any dissemination, distribution or copying of this communication is strictly prohibited. If you have received this communication in error, please immediately notify the sender and then delete the communication from your electronic mail system.



<u>ACCOUNT</u>	<u>ACCOUNT NAME</u>	<u>ORG</u>	2021 <u>Budget</u>	Balance as of 10/13/2021 <u>END BALANCE</u>	Under (Over) <u>Budget</u>	% of budget <u>Remaining</u>
<u>Sheriff</u>						
	SALARY OF PROG DIRECTOR	__10196	51,578.00	39,686.99	11,891.01	23%
	SALARIES OF PROF STAFF	__10196	3,000.00	3,000.00	-	0%
	SALARIES OF CLERICAL STAF	__10196	364,828.00	305,871.69	58,956.31	16%
	SPECIAL DEPUTY WAGES	__10196	27,000.00	11,683.29	15,316.71	57%
	FRINGE BENEFITS	__10196	41,000.00	35,664.53	5,335.47	13%
	ADVERTISING	__10196	200.00	548.21	(348.21)	-174%
	TELEPHONE & POSTAGE	__10196	1,450.00	403.66	1,046.34	72%
	TRAVELING EXPENSE	__10196	10,000.00	5,711.80	4,288.20	43%
	PREMIUMS ON BONDS	__10196	-	0	-	0%
	ASSOC DUES & EXPENSES	__10196	1,000.00	1,216.00	(216.00)	-22%
	CONTRACTED COMPUTER SERVICES	__10196	10,000.00	10,541.19	(541.19)	-5%
	VEHICLE MAINT. & REPAIRS	__10196	8,000.00	3,381.42	4,618.58	58%
	UNIFORM EXPENSE	__10196	7,500.00	26,257.28	(18,757.28)	-250%
	OTHER	__10196	7,500.00	10,839.01	(3,339.01)	-45%
	MATERIALS & SUPPLIES	__10196	13,000.00	11,331.99	1,668.01	13%
	CAPITAL OUTLAY	__10196	27,880.00	18,885.13	8,994.87	32%
Total Sheriff's Department			573,936.00	485,022.19	88,913.81	15%

ACCOUNT PER	ACCOUNT NAME JNL	ORG SRC	EFF DATE	REFERENCE	BEG. BALANCE	DEBITS	CREDITS	NET CHANGE	END BALANCE
010 -401-19600-000-01010 -	SALARY OF PROG DIRECTOR	__10196			0	374.48	0	374.48	374.48
* 1		3 PRJ	1/15/2021	RUN: 0 WARRANT: 011521	0				
* 1		19 PRJ	1/29/2021	RUN: 0 WARRANT: 012921		1,983.76	0	1,983.76	
* 1		33 PRJ	1/15/2021	RUN: 0 WARRANT: 011521		1,983.76	0	3,967.52	
* 1		35 PRJ	1/29/2021	RUN: 0 WARRANT: 012921		1,983.76	0	5,951.28	
* 1		43 GRV	1/15/2021	011521 ORIGINAL JNL NOT FOUND		1,983.76	0	7,935.04	
* 1		44 GRV	1/29/2021	012921 ORIGINAL JNL NOT FOUND		0	1,983.76	5,951.28	
* 2		15 PRJ	2/12/2021	RUN: 0 WARRANT: 021221		0	1,983.76	3,967.52	
* 2		27 PRJ	2/26/2021	RUN: 0 WARRANT: 022621		1,983.76	0	5,951.28	
* 3		11 PRJ	3/12/2021	RUN: 0 WARRANT: 031221		1,983.76	0	7,935.04	
* 3		15 PRJ	3/12/2021	RUN: 0 WARRANT: 031221		1,983.76	0	9,918.80	
* 3		22 PRJ	3/26/2021	RUN: 0 WARRANT: 032621		1,983.76	0	11,902.56	
* 3		40 GRV	3/12/2021	031221 ORIGINAL JNL NOT FOUND		1,983.76	0	13,886.32	
* 4		9 PRJ	4/9/2021	RUN: 0 WARRANT: 040921		0	1,983.76	11,902.56	
* 4		37 PRJ	4/23/2021	RUN: 0 WARRANT: 42321		1,983.76	0	13,886.32	
* 5		5 PRJ	5/7/2021	RUN: 0 WARRANT: 050721		1,983.76	0	15,870.08	
* 5		12 PRJ	5/12/2021	RUN: 0 WARRANT: REFUND		1,983.76	0	17,853.84	
* 5		23 PRJ	5/21/2021	RUN: 0 WARRANT: 052121		11.79	0	17,865.63	
* 6		2 PRJ	6/4/2021	RUN: 0 WARRANT: 060421		1,983.76	0	19,849.39	
* 6		31 PRJ	6/18/2021	RUN: 0 WARRANT: 061821		1,983.76	0	21,833.15	
* 7		2 PRJ	7/2/2021	RUN: 0 WARRANT: 070221		1,983.76	0	23,816.91	
* 7		43 PRJ	7/16/2021	RUN: 0 WARRANT: 071621		1,983.76	0	25,800.67	
* 7		71 PRJ	7/30/2021	RUN: 0 WARRANT: 073021		1,983.76	0	27,784.43	
* 8		36 PRJ	8/13/2021	RUN: 0 WARRANT: 081321		1,983.76	0	29,768.19	
* 8		81 PRJ	8/27/2021	RUN: 0 WARRANT: 082721		1,983.76	0	31,751.95	
* 9		6 PRJ	9/10/2021	RUN: 0 WARRANT: 091021		1,983.76	0	33,735.71	
* 9		21 PRJ	9/24/2021	RUN: 0 WARRANT: 092421		1,983.76	0	35,719.47	
* 10		2 PRJ	10/8/2021	RUN: 0 WARRANT: 100821		1,983.76	0	37,703.23	
010 -401-19600-000-01020 -	SALARIES OF PROF STAFF	__10196			0	45,638.27	5,951.28	39,686.99	39,686.99
* 2		23 API	2/11/2021	881386 90765 [REDACTED]	0				
						3,000.00	0	3,000.00	
010 -401-19600-000-01030 -	SALARIES OF CLERICAL STAF	__10196			0	3,000.00	0	3,000.00	3,000.00
* 1		3 PRJ	1/15/2021	RUN: 0 WARRANT: 011521	0				
* 1		19 PRJ	1/29/2021	RUN: 0 WARRANT: 012921		14,930.60	0	14,930.60	
* 1		33 PRJ	1/15/2021	RUN: 0 WARRANT: 011521		15,512.11	0	30,442.71	
* 1		35 PRJ	1/29/2021	RUN: 0 WARRANT: 012921		14,930.60	0	45,373.31	
* 1		43 GRV	1/15/2021	011521 ORIGINAL JNL NOT FOUND		15,512.11	0	60,885.42	
* 1		44 GRV	1/29/2021	012921 ORIGINAL JNL NOT FOUND		0	14,930.60	45,954.82	
* 2		15 PRJ	2/12/2021	RUN: 0 WARRANT: 021221		0	15,512.11	30,442.71	
* 2		27 PRJ	2/26/2021	RUN: 0 WARRANT: 022621		14,672.37	0	45,115.08	
						16,144.00	0	61,259.08	

* 3	11 PRJ	3/12/2021 RUN: 0 WARRANT: 031221	15,640.78	0	76,899.86
* 3	15 PRJ	3/12/2021 RUN: 0 WARRANT: 031221	15,640.78	0	92,540.64
* 3	22 PRJ	3/26/2021 RUN: 0 WARRANT: 032621	13,658.92	0	106,199.56
* 3	40 GRV	3/12/2021 031221 ORIGINAL JNL NOT FOUND	0	15,640.78	90,558.78
* 4	9 PRJ	4/9/2021 RUN: 0 WARRANT: 040921	17,308.67	0	107,867.45
* 4	37 PRJ	4/23/2021 RUN: 0 WARRANT: 42321	15,711.52	0	123,578.97
* 5	5 PRJ	5/7/2021 RUN: 0 WARRANT: 050721	14,756.43	0	138,335.40
* 5	12 PRJ	5/12/2021 RUN: 0 WARRANT: REFUND	161.97	0	138,497.37
* 5	23 PRJ	5/21/2021 RUN: 0 WARRANT: 052121	15,386.85	0	153,884.22
* 6	2 PRJ	6/4/2021 RUN: 0 WARRANT: 060421	16,504.63	0	170,388.85
* 6	31 PRJ	6/18/2021 RUN: 0 WARRANT: 061821	16,577.05	0	186,965.90
* 7	2 PRJ	7/2/2021 RUN: 0 WARRANT: 070221	14,319.11	0	201,285.01
* 7	43 PRJ	7/16/2021 RUN: 0 WARRANT: 071621	14,430.43	0	215,715.44
* 7	71 PRJ	7/30/2021 RUN: 0 WARRANT: 073021	15,780.59	0	231,496.03
* 8	36 PRJ	8/13/2021 RUN: 0 WARRANT: 081321	13,134.08	0	244,630.11
* 8	81 PRJ	8/27/2021 RUN: 0 WARRANT: 082721	12,913.30	0	257,543.41
* 8	82 PRJ	8/27/2021 RUN: 3 WARRANT: 082521	1,529.18	0	259,072.59
* 9	6 PRJ	9/10/2021 RUN: 0 WARRANT: 091021	17,359.69	0	276,432.28
* 9	21 PRJ	9/24/2021 RUN: 0 WARRANT: 092421	14,700.08	0	291,132.36
* 10	2 PRJ	10/8/2021 RUN: 0 WARRANT: 100821	14,739.33	0	305,871.69
			0	##### 46,083.49	305,871.69 #####
			0		
010 -401-19600-000-01040 -	SPECIAL DEPUTY WAGES	__10196			
* 1	3 PRJ	1/15/2021 RUN: 0 WARRANT: 011521	291.9	0	291.9
* 1	19 PRJ	1/29/2021 RUN: 0 WARRANT: 012921	616.95	0	908.85
* 1	33 PRJ	1/15/2021 RUN: 0 WARRANT: 011521	291.9	0	1,200.75
* 1	35 PRJ	1/29/2021 RUN: 0 WARRANT: 012921	616.95	0	1,817.70
* 1	43 GRV	1/15/2021 011521 ORIGINAL JNL NOT FOUND	0	291.9	1,525.80
* 1	44 GRV	1/29/2021 012921 ORIGINAL JNL NOT FOUND	0	616.95	908.85
* 2	15 PRJ	2/12/2021 RUN: 0 WARRANT: 021221	462.45	0	1,371.30
* 2	27 PRJ	2/26/2021 RUN: 0 WARRANT: 022621	1,018.81	0	2,390.11
* 3	11 PRJ	3/12/2021 RUN: 0 WARRANT: 031221	391.22	0	2,781.33
* 3	15 PRJ	3/12/2021 RUN: 0 WARRANT: 031221	391.22	0	3,172.55
* 3	22 PRJ	3/26/2021 RUN: 0 WARRANT: 032621	1,441.74	0	4,614.29
* 3	40 GRV	3/12/2021 031221 ORIGINAL JNL NOT FOUND	0	391.22	4,223.07
* 4	9 PRJ	4/9/2021 RUN: 0 WARRANT: 040921	543.94	0	4,767.01
* 4	37 PRJ	4/23/2021 RUN: 0 WARRANT: 42321	497.78	0	5,264.79
* 5	5 PRJ	5/7/2021 RUN: 0 WARRANT: 050721	240.73	0	5,505.52
* 5	23 PRJ	5/21/2021 RUN: 0 WARRANT: 052121	192.69	0	5,698.21
* 6	2 PRJ	6/4/2021 RUN: 0 WARRANT: 060421	350.61	0	6,048.82
* 6	31 PRJ	6/18/2021 RUN: 0 WARRANT: 061821	553.88	0	6,602.70
* 7	2 PRJ	7/2/2021 RUN: 0 WARRANT: 070221	884.29	0	7,486.99
* 7	43 PRJ	7/16/2021 RUN: 0 WARRANT: 071621	444.82	0	7,931.81
* 7	71 PRJ	7/30/2021 RUN: 0 WARRANT: 073021	468.16	0	8,399.97
* 8	36 PRJ	8/13/2021 RUN: 0 WARRANT: 081321	383.93	0	8,783.90
* 8	81 PRJ	8/27/2021 RUN: 0 WARRANT: 082721	781.7	0	9,565.60

* 9	6 PRJ	9/10/2021 RUN: 0 WARRANT: 091021	583.19	0	10,148.79		
* 9	21 PRJ	9/24/2021 RUN: 0 WARRANT: 092421	286.72	0	10,435.51		
*10	2 PRJ	10/8/2021 RUN: 0 WARRANT: 100821	1,247.78	0	11,683.29		
			0	12,983.36	1,300.07	11,683.29	11,683.29
010 -401-19600-000-01050 -	FRINGE BENEFITS	___10196	0				
* 1	3 PRJ	1/15/2021 RUN: 0 WARRANT: 011521	2,049.05	0	2,049.05		
* 1	19 PRJ	1/29/2021 RUN: 0 WARRANT: 012921	2,161.29	0	4,210.34		
* 1	33 PRJ	1/15/2021 RUN: 0 WARRANT: 011521	2,049.05	0	6,259.39		
* 1	35 PRJ	1/29/2021 RUN: 0 WARRANT: 012921	2,161.29	0	8,420.68		
* 1	43 GRV	1/15/2021 011521 ORIGINAL JNL NOT FOUND	0	2,049.05	6,371.63		
* 1	44 GRV	1/29/2021 012921 ORIGINAL JNL NOT FOUND	0	2,161.29	4,210.34		
* 2	15 PRJ	2/12/2021 RUN: 0 WARRANT: 021221	2,038.43	0	6,248.77		
* 2	27 PRJ	2/26/2021 RUN: 0 WARRANT: 022621	2,291.89	0	8,540.66		
* 3	11 PRJ	3/12/2021 RUN: 0 WARRANT: 031221	2,149.64	0	10,690.30		
* 3	15 PRJ	3/12/2021 RUN: 0 WARRANT: 031221	2,149.64	0	12,839.94		
* 3	22 PRJ	3/26/2021 RUN: 0 WARRANT: 032621	1,970.57	0	14,810.51		
* 3	40 GRV	3/12/2021 031221 ORIGINAL JNL NOT FOUND	0	2,149.64	12,660.87		
* 4	9 PRJ	4/9/2021 RUN: 0 WARRANT: 040921	2,299.13	0	14,960.00		
* 4	37 PRJ	4/23/2021 RUN: 0 WARRANT: 42321	1,858.19	0	16,818.19		
* 5	5 PRJ	5/7/2021 RUN: 0 WARRANT: 050721	1,648.22	0	18,466.41		
* 5	23 PRJ	5/21/2021 RUN: 0 WARRANT: 052121	1,569.12	0	20,035.53		
* 6	2 PRJ	6/4/2021 RUN: 0 WARRANT: 060421	1,719.01	0	21,754.54		
* 6	31 PRJ	6/18/2021 RUN: 0 WARRANT: 061821	1,771.38	0	23,525.92		
* 7	2 PRJ	7/2/2021 RUN: 0 WARRANT: 070221	1,568.66	0	25,094.58		
* 7	43 PRJ	7/16/2021 RUN: 0 WARRANT: 071621	1,502.53	0	26,597.11		
* 7	71 PRJ	7/30/2021 RUN: 0 WARRANT: 073021	1,618.28	0	28,215.39		
* 8	36 PRJ	8/13/2021 RUN: 0 WARRANT: 081321	1,336.40	0	29,551.79		
* 8	81 PRJ	8/27/2021 RUN: 0 WARRANT: 082721	1,425.44	0	30,977.23		
* 8	82 PRJ	8/27/2021 RUN: 3 WARRANT: 082521	116.98	0	31,094.21		
* 9	6 PRJ	9/10/2021 RUN: 0 WARRANT: 091021	1,718.19	0	32,812.40		
* 9	21 PRJ	9/24/2021 RUN: 0 WARRANT: 092421	1,402.51	0	34,214.91		
*10	2 PRJ	10/8/2021 RUN: 0 WARRANT: 100821	1,449.62	0	35,664.53		
			0	42,024.51	6,359.98	35,664.53	35,664.53
010 -401-19600-000-02010 -	ADVERTISING	___10196	0				
* 2	23 API	2/11/2021 022350 90767 BEDFORD CO LEGA	27.5	0	27.5		
* 3	37 API	3/31/2021 022350 91681 BEDFORD CO LEGA	100	0	127.5		
* 4	40 API	4/23/2021 022400 92207 GAZETTE	222.42	0	349.92		
* 8	15 API	8/3/2021 022400 94512 GAZETTE	198.29	0	548.21		
			0	548.21	0	548.21	548.21
010 -401-19600-000-02020 -	TELEPHONE & POSTAGE	___10196	0				
* 1	42 GNI	1/31/2021 010006 Postage January 2021	134.2	0	134.2		
* 2	49 GNI	2/28/2021 020006 Postage February 2021	148.04	0	282.24		
* 3	38 GNI	3/31/2021 030006 Postage march 2021	121.42	0	403.66		
			0	403.66	0	403.66	403.66
010 -401-19600-000-02030 -	TRAVELING EXPENSE	___10196	0				

* 1	12 API	1/8/2021	883375 90477	PETTY CASH	16.05	0	16.05		
* 2	33 API	2/16/2021	882864 90999	WEX BANK	1,065.89	0	1,081.94		
* 3	13 API	3/2/2021	120100 91220	LASALLE'S GARAG	657.84	0	1,739.78		
* 4	21 API	4/9/2021	020300 91953	BARNES' GARAGE	39.2	0	1,778.98		
* 5	6 API	5/6/2021	883162 92314	WILLIAM DECOURC	171.6	0	1,950.58		
* 5	13 API	5/6/2021	882864 92424	WEX BANK	1,054.16	0	3,004.74		
* 5	33 API	5/14/2021	883447 92577	PA TURNPIKE TOL	10	0	3,014.74		
* 5	66 API	5/26/2021	020300 92884	BARNES' GARAGE	216.95	0	3,231.69		
* 7	51 API	7/19/2021	000099 94165	FNB COMMERICAL	248.1	0	3,479.79		
* 8	12 API	8/4/2021	882864 94686	WEX BANK	134.33	0	3,614.12		
* 8	12 API	8/4/2021	882864 94686	WEX BANK	275.79	0	3,889.91		
* 8	12 API	8/4/2021	882864 94686	WEX BANK	83.8	0	3,973.71		
* 8	12 API	8/4/2021	882864 94686	WEX BANK	112.77	0	4,086.48		
* 8	12 API	8/4/2021	882864 94686	WEX BANK	100.95	0	4,187.43		
* 8	12 API	8/4/2021	882864 94686	WEX BANK	136.67	0	4,324.10		
* 8	12 API	8/4/2021	882864 94686	WEX BANK	48.83	0	4,372.93		
* 8	12 API	8/4/2021	882864 94686	WEX BANK	190.5	0	4,563.43		
* 8	50 API	8/18/2021	882864 95070	WEX BANK	166.12	0	4,729.55		
* 8	50 API	8/18/2021	882864 95070	WEX BANK	48.5	0	4,778.05		
* 8	50 API	8/18/2021	882864 95070	WEX BANK	189.02	0	4,967.07		
* 8	50 API	8/18/2021	882864 95070	WEX BANK	104.72	0	5,071.79		
* 8	50 API	8/18/2021	882864 95070	WEX BANK	123.74	0	5,195.53		
* 8	50 API	8/18/2021	882864 95070	WEX BANK	221.43	0	5,416.96		
* 8	50 API	8/18/2021	882864 95070	WEX BANK	63.87	0	5,480.83		
* 8	50 API	8/18/2021	882864 95070	WEX BANK	230.97	0	5,711.80		
					0	5,711.80	0	5,711.80	5,711.80
010 -401-19600-000-02040 -	PREMIUMS ON BONDS	___10196			0	0	0	0	0
010 -401-19600-000-02050 -	ASSOC DUES & EXPENSES	___10196			0	0	0	0	0
* 2	23 API	2/11/2021	193675 90766	SHERIFFS' ASSOC	650	0	650		
* 2	23 API	2/11/2021	193675 90766	SHERIFFS' ASSOC	25	0	675		
* 2	23 API	2/11/2021	193675 90766	SHERIFFS' ASSOC	25	0	700		
* 3	13 API	3/2/2021	022400 91194	GAZETTE	167	0	867		
* 4	17 API	4/6/2021	883006 91733	CENTER FOR EDUC	159	0	1,026.00		
* 5	19 API	5/7/2021	000049 92406	IACP	190	0	1,216.00		
					0	1,216.00	0	1,216.00	1,216.00
010 -401-19600-000-02070 -	CONTRACTED COMPUTER SERVICES	___10196			0	0	0	0	0
* 1	12 API	1/8/2021	131650 90567	McCARTNEY'S	27.13	0	27.13		
* 2	23 API	2/11/2021	096050 90768	INFOCON CORP	730	0	757.13		
* 3	31 API	3/16/2021	096050 91520	INFOCON CORP	730	0	1,487.13		
* 3	31 API	3/16/2021	096050 91521	INFOCON CORP	730	0	2,217.13		
* 4	17 API	4/6/2021	096050 91724	INFOCON CORP	730	0	2,947.13		
* 4	17 API	4/6/2021	096050 91734	INFOCON CORP	730	0	3,677.13		
* 4	21 API	4/9/2021	883641 91940	INFORMANT TECH	2,400.00	0	6,077.13		
* 4	40 API	4/23/2021	131650 92226	McCARTNEY'S	34.26	0	6,111.39		

010 -401-19600-000-02090 -

UNIFORM EXPENSE

__10196

0

* 2	23 API	2/11/2021	070420 90759	GALL'S INC.	373.14	0	373.14
* 3	13 API	3/2/2021	883473 91199	PITTSBURGH PUBL	1,914.96	0	2,288.10
* 3	13 API	3/2/2021	883473 91217	PITTSBURGH PUBL	700.88	0	2,988.98
* 3	13 API	3/2/2021	883473 91218	PITTSBURGH PUBL	230.95	0	3,219.93
* 3	37 API	3/31/2021	070420 91703	GALL'S INC.	702.53	0	3,922.46
* 4	5 API	4/5/2021	883427 91705	[REDACTED]	175	0	4,097.46
* 4	5 API	4/5/2021	883431 91706	[REDACTED]	175	0	4,272.46
* 4	5 API	4/5/2021	883014 91707	[REDACTED]	175	0	4,447.46
* 4	5 API	4/5/2021	883177 91708	[REDACTED]	175	0	4,622.46
* 4	5 API	4/5/2021	883645 91709	[REDACTED]	175	0	4,797.46
* 4	5 API	4/5/2021	877004 91710	[REDACTED]	175	0	4,972.46
* 4	5 API	4/5/2021	882322 91718	[REDACTED]	87.5	0	5,059.96
* 4	5 API	4/5/2021	883639 91719	[REDACTED]	87.5	0	5,147.46
* 4	5 API	4/5/2021	883646 91711	[REDACTED]	175	0	5,322.46
* 4	5 API	4/5/2021	883637 91712	[REDACTED]	175	0	5,497.46
* 4	5 API	4/5/2021	883638 91713	[REDACTED]	175	0	5,672.46
* 4	5 API	4/5/2021	880492 91714	[REDACTED]	87.5	0	5,759.96
* 4	5 API	4/5/2021	883426 91716	[REDACTED]	87.5	0	5,847.46
* 4	5 API	4/5/2021	883330 91717	[REDACTED]	87.5	0	5,934.96
* 4	17 API	4/6/2021	883473 91738	PITTSBURGH PUBL	119.97	0	6,054.93
* 5	33 API	5/14/2021	070420 92528	GALL'S INC.	31.45	0	6,086.38
* 5	33 API	5/14/2021	070420 92531	GALL'S INC.	42.07	0	6,128.45
* 5	33 API	5/14/2021	883222 92582	PHAZZER LLC	143.22	0	6,271.67
* 5	64 API	5/27/2021	883473 93045	PITTSBURGH PUBL	1,021.97	0	7,293.64
* 5	66 API	5/26/2021	070420 92956	GALL'S INC.	355.74	0	7,649.38
* 5	66 API	5/26/2021	070420 92957	GALL'S INC.	197.33	0	7,846.71
* 5	66 API	5/26/2021	070420 92958	GALL'S INC.	19.14	0	7,865.85
* 5	66 API	5/26/2021	070420 92959	GALL'S INC.	43.89	0	7,909.74
* 5	66 API	5/26/2021	070420 92960	GALL'S INC.	296.73	0	8,206.47
* 5	66 API	5/26/2021	070420 92961	GALL'S INC.	121.81	0	8,328.28
* 5	66 API	5/26/2021	070420 92962	GALL'S INC.	274.99	0	8,603.27
* 5	66 API	5/26/2021	070420 92963	GALL'S INC.	71.44	0	8,674.71
* 5	66 API	5/26/2021	070420 92964	GALL'S INC.	88.2	0	8,762.91
* 5	66 API	5/26/2021	070420 92965	GALL'S INC.	22.5	0	8,785.41
* 5	66 API	5/26/2021	070420 92966	GALL'S INC.	41.13	0	8,826.54
* 5	66 API	5/26/2021	070420 92967	GALL'S INC.	14.99	0	8,841.53
* 6	19 API	6/10/2021	070420 93390	GALL'S INC.	0	44.1	8,797.43
* 6	50 API	6/23/2021	883473 93712	PITTSBURGH PUBL	208.96	0	9,006.39
* 6	50 API	6/23/2021	883473 93713	PITTSBURGH PUBL	182.37	0	9,188.76
* 6	59 API	6/22/2021	883473 93570	PITTSBURGH PUBL	939.36	0	10,128.12
* 6	59 API	6/22/2021	883473 93571	PITTSBURGH PUBL	988.84	0	11,116.96
* 7	51 API	7/19/2021	070420 94170	GALL'S INC.	247.3	0	11,364.26
* 7	51 API	7/19/2021	070420 94171	GALL'S INC.	123	0	11,487.26
* 7	51 API	7/19/2021	070420 94172	GALL'S INC.	31.22	0	11,518.48

Staff names

* 4	40 API	4/23/2021	880757 92280	IRIS COMPANIES	779.8	0	6,891.19	
* 5	64 API	5/27/2021	096050 93027	INFOCON CORP	730	0	7,621.19	
* 6	55 API	6/23/2021	096050 93673	INFOCON CORP	730	0	8,351.19	
* 7	51 API	7/19/2021	096050 94187	INFOCON CORP	730	0	9,081.19	
* 8	15 API	8/3/2021	096050 94526	INFOCON CORP	730	0	9,811.19	
* 9	24 API	9/15/2021	096050 95446	INFOCON CORP	730	0	10,541.19	
					0	10,541.19	0	10,541.19 10,541.19
010 -401-19600-000-02080 -	VEHICLE MAINT. & REPAIRS		10196		0			
* 1	12 API	1/8/2021	862412 90570	BEDFORD TRUE VA	19.79	0	19.79	
* 1	12 API	1/8/2021	131650 90450	McCARTNEY'S	32.64	0	52.43	
* 2	23 API	2/11/2021	120100 90757	LASALLE'S GARAG	58.74	0	111.17	
* 2	23 API	2/11/2021	020300 90758	BARNES' GARAGE	39.2	0	150.37	
* 3	13 API	3/2/2021	120100 91198	LASALLE'S GARAG	69.82	0	220.19	
* 3	13 API	3/2/2021	867757 91208	AUTOZONE	33.98	0	254.17	
* 3	37 API	3/31/2021	203800 91603	THOMAS CHEVROLE	346.75	0	600.92	
* 3	37 API	3/31/2021	120100 91627	LASALLE'S GARAG	43.02	0	643.94	
* 4	17 API	4/6/2021	867757 91740	AUTOZONE	138.88	0	782.82	
* 5	6 API	5/6/2021	020310 92303	BARNES BODY SHO	1,401.19	0	2,184.01	
* 5	6 API	5/6/2021	089500 92322	HUNTS PROMOTION	84.8	0	2,268.81	
* 5	13 API	5/6/2021	120100 92332	LASALLE'S GARAG	0.64	0	2,269.45	
* 5	13 API	5/6/2021	120100 92333	LASALLE'S GARAG	340.78	0	2,610.23	
* 5	13 API	5/6/2021	120100 92334	LASALLE'S GARAG	33.02	0	2,643.25	
* 5	13 API	5/6/2021	883473 92345	PITTSBURGH PUBL	44.97	0	2,688.22	
* 5	33 API	5/14/2021	089500 92535	HUNTS PROMOTION	145	0	2,833.22	
* 5	33 API	5/14/2021	120100 92567	LASALLE'S GARAG	81.68	0	2,914.90	
* 5	33 API	5/14/2021	120100 92568	LASALLE'S GARAG	125.34	0	3,040.24	
* 6	59 API	6/22/2021	022362 93524	BEDFORD CHRYSL	161.57	0	3,201.81	
* 6	59 API	6/22/2021	120100 93564	LASALLE'S GARAG	140.5	0	3,342.31	
* 6	59 API	6/22/2021	203800 93584	THOMAS CHEVROLE	106.78	0	3,449.09	
* 7	51 API	7/19/2021	022362 94101	BEDFORD CHRYSL	210.07	0	3,659.16	
* 7	52 API	7/21/2021	120100 94209	LASALLE'S GARAG	33.02	0	3,692.18	
* 7	52 API	7/21/2021	120100 94210	LASALLE'S GARAG	52.95	0	3,745.13	
* 7	52 API	7/21/2021	120100 94211	LASALLE'S GARAG	33.02	0	3,778.15	
* 7	52 API	7/21/2021	120100 94332	LASALLE'S GARAG	320.89	0	4,099.04	
* 7	52 API	7/21/2021	120100 94333	LASALLE'S GARAG	55	0	4,154.04	
* 8	12 API	8/4/2021	203800 94640	THOMAS CHEVROLE	145.79	0	4,299.83	
* 8	50 API	8/18/2021	120100 94938	LASALLE'S GARAG	112.5	0	4,412.33	
* 8	50 API	8/18/2021	120100 94939	LASALLE'S GARAG	10	0	4,422.33	
* 8	65 API	8/17/2021	867757 94850	AUTOZONE	7.09	0	4,429.42	
* 8	65 API	8/17/2021	867757 94851	AUTOZONE	0	61.27	4,368.15	
* 8	92 API	8/31/2021	867757 95142	AUTOZONE	57.07	0	4,425.22	
* 8	92 API	8/31/2021	120100 95208	LASALLE'S GARAG	35	0	4,460.22	
* 8	96 GEN	8/13/2021	PCORE CLAIM CK - SHERIFF'S O		0	1,474.67	2,985.55	
* 9	49 API	9/29/2021	120100 95737	LASALLE'S GARAG	395.87	0	3,381.42	
					0	4,917.36	1,535.94	3,381.42 3,381.42

* 7	51 API	7/19/2021	070420 94173	GALL'S INC.	189.57	0	11,708.05	
* 7	52 API	7/21/2021	883473 94232	PITTSBURGH PUBL	4,087.88	0	15,795.93	
* 7	52 API	7/21/2021	207585 94338	TRAPUZZANOS	22.5	0	15,818.43	
* 8	12 API	8/4/2021	883473 94598	PITTSBURGH PUBL	135.98	0	15,954.41	
* 8	12 API	8/4/2021	883473 94599	PITTSBURGH PUBL	1,011.84	0	16,966.25	
* 8	12 API	8/4/2021	883473 94600	PITTSBURGH PUBL	988.84	0	17,955.09	
* 8	15 API	8/3/2021	070420 94510	GALL'S INC.	353.99	0	18,309.08	
* 8	50 API	8/18/2021	070420 94911	GALL'S INC.	119.99	0	18,429.07	
* 8	50 API	8/18/2021	070420 94912	GALL'S INC.	170.44	0	18,599.51	
* 8	92 API	8/31/2021	070420 95186	GALL'S INC.	326.27	0	18,925.78	
* 8	92 API	8/31/2021	070420 95187	GALL'S INC.	150.56	0	19,076.34	
* 8	92 API	8/31/2021	070420 95190	GALL'S INC.	143.84	0	19,220.18	
* 8	92 API	8/31/2021	883473 95230	PITTSBURGH PUBL	446.95	0	19,667.13	
* 9	24 API	9/15/2021	070420 95435	GALL'S INC.	23.64	0	19,690.77	
* 9	24 API	9/15/2021	070420 95436	GALL'S INC.	695	0	20,385.77	
* 9	30 API	9/28/2021	883431 95613	[REDACTED]	175	0	20,560.77	
* 9	30 API	9/28/2021	000330 95614	[REDACTED]	175	0	20,735.77	
* 9	30 API	9/28/2021	883637 95615	[REDACTED]	175	0	20,910.77	
* 9	30 API	9/28/2021	883638 95616	[REDACTED]	175	0	21,085.77	
* 9	30 API	9/28/2021	000331 95617	[REDACTED]	175	0	21,260.77	
* 9	30 API	9/28/2021	000332 95618	[REDACTED]	175	0	21,435.77	
* 9	30 API	9/28/2021	000333 95628	[REDACTED]	87.5	0	21,523.27	
* 9	30 API	9/28/2021	883307 95619	[REDACTED]	175	0	21,698.27	
* 9	30 API	9/28/2021	880492 95620	[REDACTED]	87.5	0	21,785.77	
* 9	30 API	9/28/2021	883426 95621	[REDACTED]	87.5	0	21,873.27	
* 9	30 API	9/28/2021	883330 95622	[REDACTED]	87.5	0	21,960.77	
* 9	30 API	9/28/2021	882322 95623	[REDACTED]	87.5	0	22,048.27	
* 9	30 API	9/28/2021	883639 95624	[REDACTED]	87.5	0	22,135.77	
* 9	49 API	9/29/2021	070420 95722	GALL'S INC.	36.66	0	22,172.43	
* 9	49 API	9/29/2021	070420 95723	GALL'S INC.	717.99	0	22,890.42	
* 9	52 API	9/29/2021	883473 95766	PITTSBURGH PUBL	3,194.91	0	26,085.33	
* 9	52 API	9/29/2021	883473 95767	PITTSBURGH PUBL	57.96	0	26,143.29	
* 9	52 API	9/29/2021	883473 95768	PITTSBURGH PUBL	113.99	0	26,257.28	
					0 26,301.38	44.1	26,257.28	26,257.28
010 -401-19600-000-02110 -	OTHER		__10196		0			
* 2	23 API	2/11/2021	883375 90775	PETTY CASH	69.35	0	69.35	
* 2	33 API	2/16/2021	883025 90935	PURE WATER PART	208.85	0	278.2	
* 2	33 API	2/16/2021	883025 90985	PURE WATER PART	208.85	0	487.05	
* 2	33 API	2/16/2021	883375 90996	PETTY CASH	72	0	559.05	
* 2	33 API	2/16/2021	881505 91061	MOREFIELD COMMU	1,887.50	0	2,446.55	
* 3	13 API	3/2/2021	883375 91258	PETTY CASH	102	0	2,548.55	
* 4	33 API	4/14/2021	883375 92010	PETTY CASH	72.32	0	2,620.87	
* 4	33 API	4/14/2021	883375 92011	PETTY CASH	113.67	0	2,734.54	
* 4	40 API	4/23/2021	883473 92281	PITTSBURGH PUBL	5,285.52	0	8,020.06	
* 5	6 API	5/6/2021	010055 92297	AERIAL COMMUNIC	1,200.00	0	9,220.06	

Staff names

* 5	13 API	5/6/2021	883375 92344	PETTY CASH	86.64	0	9,306.70
* 5	33 API	5/14/2021	160210 92521	FIRST NATIONAL	450	0	9,756.70
* 5	62 API	5/27/2021	883375 92992	PETTY CASH	53.97	0	9,810.67
* 5	64 API	5/27/2021	883025 93049	PURE WATER PART	188.85	0	9,999.52
* 6	8 API	6/7/2021	883375 93245	PETTY CASH	63.91	0	10,063.43
* 6	52 API	6/23/2021	883375 93622	PETTY CASH	91.28	0	10,154.71
* 6	55 API	6/23/2021	883375 93685	PETTY CASH	107.12	0	10,261.83
* 6	59 API	6/22/2021	196600 93546	COM PROS	89	0	10,350.83
* 7	51 API	7/19/2021	000099 94165	FNB COMMERICAL	14.95	0	10,365.78
* 7	52 API	7/21/2021	883375 94231	PETTY CASH	102.04	0	10,467.82
* 8	12 API	8/4/2021	883375 94594	PETTY CASH	62.2	0	10,530.02
* 8	50 API	8/18/2021	883025 94968	PURE WATER PART	188.85	0	10,718.87
* 8	65 API	8/17/2021	883375 95097	PETTY CASH	37.2	0	10,756.07
* 8	92 API	8/31/2021	883375 95229	PETTY CASH	24	0	10,780.07
* 9	26 API	9/16/2021	883375 95509	PETTY CASH	10	0	10,790.07
* 9	52 API	9/29/2021	883375 95763	PETTY CASH	29	0	10,819.07
* 9	52 API	9/29/2021	000099 95824	FNB COMMERICAL	19.94	0	10,839.01
					0	10,839.01	10,839.01
010 -401-19600-000-03010 -	MATERIALS & SUPPLIES		__10196		0		
* 1	12 API	1/8/2021	131650 90568	McCartney's	42.79	0	42.79
* 1	12 API	1/8/2021	131650 90569	McCartney's	35.74	0	78.53
* 1	12 API	1/8/2021	036850 90445	Corle's Printin	99.28	0	177.81
* 2	33 API	2/16/2021	862412 90893	Bedford True Va	79.15	0	256.96
* 3	13 API	3/2/2021	207600 91197	Tri-County Offi	87.98	0	344.94
* 3	13 API	3/2/2021	207600 91200	Tri-County Offi	31.98	0	376.92
* 3	13 API	3/2/2021	207600 91209	Tri-County Offi	763.94	0	1,140.86
* 3	37 API	3/31/2021	000131 91647	McCartney's	76.32	0	1,217.18
* 3	37 API	3/31/2021	070420 91704	Gall's Inc.	514.72	0	1,731.90
* 4	40 API	4/23/2021	872449 92197	Office Depot CR	225.98	0	1,957.88
* 4	46 API	4/22/2021	000029 92160	PA DUI Associat	233.75	0	2,191.63
* 5	13 API	5/6/2021	161200 92343	PA DUI Associat	210	0	2,401.63
* 5	29 API	5/17/2021	207600 92612	Tri-County Offi	173.61	0	2,575.24
* 5	33 API	5/14/2021	070420 92529	Gall's Inc.	279.97	0	2,855.21
* 5	64 API	5/27/2021	000066 93033	K-LOG	2,116.00	0	4,971.21
* 6	19 API	6/10/2021	862412 93326	Bedford True Va	1.78	0	4,972.99
* 6	19 API	6/10/2021	131650 93375	McCartney's	27.88	0	5,000.87
* 6	19 API	6/10/2021	131650 93376	McCartney's	51.89	0	5,052.76
* 6	44 API	6/10/2021	000099 93415	FNB COMMERICAL	17.49	0	5,070.25
* 6	50 API	6/23/2021	131650 93711	McCartney's	48.74	0	5,118.99
* 6	55 API	6/23/2021	070420 93667	Gall's Inc.	91.19	0	5,210.18
* 7	17 API	7/6/2021	070420 93799	Gall's Inc.	0	74.69	5,135.49
* 7	17 API	7/6/2021	872449 93833	Office Depot CR	24.99	0	5,160.48
* 7	17 API	7/6/2021	872449 93834	Office Depot CR	3.69	0	5,164.17
* 7	17 API	7/6/2021	872449 93838	Office Depot CR	140.99	0	5,305.16
* 7	17 API	7/6/2021	872449 93839	Office Depot CR	119.99	0	5,425.15

* 7	17 API	7/6/2021	000100 93991	A LOVING TOUCH	99.11	0	5,524.26		
* 7	51 API	7/19/2021	882797 94100	ATLANTIC TACTIC	47.98	0	5,572.24		
* 7	51 API	7/19/2021	089500 94183	HUNTS PROMOTION	280	0	5,852.24		
* 7	52 API	7/21/2021	131650 94213	McCARTNEY'S	44.59	0	5,896.83		
* 7	52 API	7/21/2021	131650 94214	McCARTNEY'S	49.88	0	5,946.71		
* 7	52 API	7/21/2021	872449 94222	OFFICE DEPOT CR	15.13	0	5,961.84		
* 8	12 API	8/4/2021	872449 94573	OFFICE DEPOT CR	200.05	0	6,161.89		
* 8	12 API	8/4/2021	872449 94574	OFFICE DEPOT CR	48.28	0	6,210.17		
* 8	12 API	8/4/2021	872449 94575	OFFICE DEPOT CR	133.44	0	6,343.61		
* 8	15 API	8/3/2021	036850 94497	CORLE'S PRINTIN	108	0	6,451.61		
* 8	15 API	8/3/2021	070420 94511	GALL'S INC.	277.39	0	6,729.00		
* 8	15 API	8/3/2021	881501 94519	HANDCUFF WAREHO	1,437.48	0	8,166.48		
* 8	50 API	8/18/2021	872449 95007	OFFICE DEPOT CR	7.59	0	8,174.07		
* 8	50 API	8/18/2021	207600 95012	TRI-COUNTY OFFI	628	0	8,802.07		
* 8	61 API	8/19/2021	881501 95102	HANDCUFF WAREHO	961.9	0	9,763.97		
* 8	61 API	8/19/2021	872449 95112	OFFICE DEPOT CR	20.88	0	9,784.85		
* 8	92 API	8/31/2021	880757 95198	IRIS COMPANIES	810.43	0	10,595.28		
* 8	92 API	8/31/2021	230275 95284	WAL-MART	87.65	0	10,682.93		
* 9	24 API	9/15/2021	000131 95442	ID Graphics	331.07	0	11,014.00		
* 9	26 API	9/16/2021	872449 95491	OFFICE DEPOT CR	87.33	0	11,101.33		
* 9	26 API	9/16/2021	872449 95492	OFFICE DEPOT CR	12.99	0	11,114.32		
* 9	49 API	9/29/2021	096050 95727	INFOCON CORP	217.67	0	11,331.99		
					0	11,406.68	74.69	11,331.99	11,331.99
					0				
010 -401-19600-000-04010 -	CAPITAL OUTLAY		__10196						
* 6	55 API	6/23/2021	882797 93652	ATLANTIC TACTIC	68.93	0	68.93		
* 6	59 API	6/22/2021	882102 93554	F.N.B. EQUIP FI	18,816.20	0	18,885.13		
					0	18,885.13	0	18,885.13	18,885.13

Debra Brown

From: Mike Samson <msamson@susacs.com>
Sent: Monday, November 1, 2021 9:12 AM
To: Melissa Cottle
Cc: Commissioner Dallara; Commissioner Frederick; Commissioner Baughman; Tracey Snyder
Subject: Transfer

Hi Melissa,

Could you transfer \$600,000 from the General Fund Money Market Account to the General Fund Checking account to cover this week's payroll and other expenses?

Thank You

Mike

Mike Samson, CPA
Director
Susquehanna Accounting & Consulting Solutions, Inc.
(717) 561-8089 Ext. 5018

Debra Brown

From: Mike Samson <msamson@susacs.com>
Sent: Thursday, November 4, 2021 1:18 PM
To: Commissioner Dallara; Commissioner Frederick; Commissioner Baughman
Subject: ARPA
Attachments: Potential Covid 19 Expenses.docx

Commissioner's,

As requested, I attached a document that can be provided to the departments explaining the process for identifying eligible ARPA expenses. The first page of the document explains general eligible expenses and the documentation the county would need. The second page is specific questions to ask various departments for whomever will be helping this task. Let me know if this is what you are looking for.

Thanks

Mike

Mike Samson, CPA
Director
Susquehanna Accounting & Consulting Solutions, Inc.
(717) 561-8089 Ext. 5018

Bedford County
Potential 2021 COVID 19 Expenses

The Commissioner are asking all departments to identify possible expenses from March 3, 2021 thru present that may be eligible to be reimbursed through the American Rescue Plan Grant Funds the County has received. Documentation of the potential eligible expense should include:

- Invoice and rationale for why the expenditure mitigates or prevents the spread of COVID 19
- Documentation of the date and hours worked (timecard) and what activity the employee was performing to mitigate or prevent the spread of COVID 19

In general, for an expense to be eligible under the American Rescue Plan funding, the expense must have been used to **prevent or mitigate the spread of the COVID 19 virus from March 3, 2021 thru present**

Some general allowable expenses (not meant to be an all-inclusive list) are:

- COVID-19 related expenses in congregate living facilities, such as jails, and other group living facilities;
- COVID-19 testing and monitoring, contact tracing, case monitoring and variant monitoring;
- Emergency medical response expenses, including emergency medical transportation, related to COVID-19;
- Acquiring and distributing medical and protective supplies, including sanitizing products and personal protective equipment;
- Disinfection of public areas and other facilities in response to the COVID-19 public health emergency;
- Expenses related to technical assistance to local authorities or other entities regarding COVID-19 health and safety mitigation;
- COVID-19 quarantine or isolation expenses;
- Expenses of providing paid sick and paid family and medical leave to public employees to enable compliance with COVID-19 public health precautions (voluntary FFCRA leave);
- Treatment of the long-term symptoms or effects of COVID-19;
- Mental health treatment, substance misuse treatment, and other behavioral health services;
- Expenses that improve an employee's ability to work remotely (laptops, computer upgrades, etc.)

Few potential eligible expenses noted to discuss with departments:

1. Public Defender
 - a. Any wages paid to attorneys for cases related to COVID-19 (gray area)
2. Maintenance
 - a. Sanitation supply expense
 - b. Employee wages to sanitize the building due to COVID 19
3. Veterans Affairs
 - a. Any burial expenses due to COVID 19
4. Courts (DJ's, Courts, Probation)
 - a. DJ cleaning expenses as they were not budgeted this year?
 - b. Costs to clear court related backlogs due to COVID-19 including wages, postage, etc.
5. Coroner
 - a. Increased autopsy expense
 - b. Increases wages paid due to the pandemic
6. Sheriff
 - a. Any deputies' wages responding to pandemic
7. Jail
 - a. Any correction officer's wages responding to pandemic at jail
 - i. Quarantining of prisoners
 - ii. Anything performed at the jail to prevent and mitigate the spread of the virus or in response to an outbreak at the jail
 - iii. Was there a designated covid area for sick prisoners?
 - b. Medical or mental health expenses for prisoners with covid-19
 - c. Sanitation supplies and wages to perform the sanitation
 - d. Any change this year to the supplying and feeding of prisoners to prevent the spread of covid 19?

Debra Brown

From: Commissioner Baughman
Sent: Thursday, November 4, 2021 1:39 PM
To: Mike Samson; Commissioner Dallara; Commissioner Frederick
Subject: Re: ARPA

Mike, wouldn't expenses related to services to the public to allow distancing such as free online access to records be covered?

Sent from my Verizon, Samsung Galaxy smartphone
Get [Outlook for Android](#)

From: Mike Samson <msamson@susacs.com>
Sent: Thursday, November 4, 2021 1:17:37 PM
To: Commissioner Dallara <cdallara@bedfordcountypa.org>; Commissioner Frederick <CFrederick@bedfordcountypa.org>; Commissioner Baughman <dbaughman@bedfordcountypa.org>
Subject: ARPA

Commissioner's,

As requested, I attached a document that can be provided to the departments explaining the process for identifying eligible ARPA expenses. The first page of the document explains general eligible expenses and the documentation the county would need. The second page is specific questions to ask various departments for whomever will be helping this task. Let me know if this is what you are looking for.

Thanks

Mike

Mike Samson, CPA
Director
Susquehanna Accounting & Consulting Solutions, Inc.
(717) 561-8089 Ext. 5018

Debra Brown

From: Mike Samson <msamson@susacs.com>
Sent: Thursday, November 4, 2021 1:54 PM
To: Commissioner Baughman; Commissioner Dallara; Commissioner Frederick
Subject: RE: ARPA

Deb,

Yes, anything that can be related to allowing social distancing to prevent the spread of covid would be potentially allowable. I can add that to the document.

Mike

From: Commissioner Baughman <dbaughman@bedfordcountypa.org>
Sent: Thursday, November 4, 2021 1:39 PM
To: Mike Samson <msamson@susacs.com>; Commissioner Dallara <cdallara@bedfordcountypa.org>; Commissioner Frederick <CFrederick@bedfordcountypa.org>
Subject: Re: ARPA

Mike, wouldn't expenses related to services to the public to allow distancing such as free online access to records be covered?

Sent from my Verizon, Samsung Galaxy smartphone
Get [Outlook for Android](#)

From: Mike Samson <msamson@susacs.com>
Sent: Thursday, November 4, 2021 1:17:37 PM
To: Commissioner Dallara <cdallara@bedfordcountypa.org>; Commissioner Frederick <CFrederick@bedfordcountypa.org>; Commissioner Baughman <dbaughman@bedfordcountypa.org>
Subject: ARPA

Commissioner's,

As requested, I attached a document that can be provided to the departments explaining the process for identifying eligible ARPA expenses. The first page of the document explains general eligible expenses and the documentation the county would need. The second page is specific questions to ask various departments for whomever will be helping this task. Let me know if this is what you are looking for.

Thanks

Mike

Mike Samson, CPA
Director
Susquehanna Accounting & Consulting Solutions, Inc.
(717) 561-8089 Ext. 5018

Debra Brown

From: Mike Samson <msamson@susacs.com>
Sent: Friday, November 5, 2021 12:50 PM
To: Commissioner Dallara; Commissioner Frederick; Commissioner Baughman
Cc: Debra Brown; Corey Troutman
Subject: Budget Meeting

Deb and the Commissioners,

Corey and I would like to schedule a time to meet Tuesday afternoon (9th) to discuss the 2022 budget. Anytime in the afternoon works for us. I will be onsite but Corey will conference in for the meeting.

Deb, could you coordinate a time that would work with the Commissioner's schedule on Tuesday afternoon and let me know?

Thank You

Mike

Mike Samson, CPA
Director
Susquehanna Accounting & Consulting Solutions, Inc.
(717) 561-8089 Ext. 5018

Debra Brown

From: Mike Samson <msamson@susacs.com>
Sent: Friday, November 5, 2021 2:43 PM
To: Commissioner Dallara; Commissioner Frederick; Commissioner Baughman
Subject: 2022 Budget
Attachments: 2022 Budget Package 11-4-2021.pdf; 2022 Budget 11-4-2021 for Commissioners Line Item Detail.pdf; Options To Balance Budget.pdf

Commissioners,

Attached is the current budget information for our discussion on Tuesday. The first attachment is the budget document that is presented on your website in previous years that shows a current budget shortfall of \$2,376,535. This includes the proposed additional tax revenue from a 4.2% increase in the 2022 millage rate. The attachment contains columns for the 2021 budget, current state of the 2022 budget, and a variance column.

The second attachment contains the detailed line item budget by department in case you want to drill down into the details. This is the document that was distributed for the budget meetings with departments. This document is large so you may not want to print it.

The third attachment lists some potential options to balance the budget for the discussion on Tuesday.

Any questions, just let me know.

Have a good weekend

Mike

Mike Samson, CPA
Director
Susquehanna Accounting & Consulting Solutions, Inc.
(717) 561-8089 Ext. 5018

Shortfall in 2022 budget (2,376,535.57)

Possibilities to Balance Budget

Use Existing Fund Balance 1,250,000.00
Reduce Contribution to Retirement Plan 425,000.00

Potential ARPA Reimburment:

Maitenance	-	Cleaning Supplies and Wages
Prison	635,000.00	Medical Servies and food, salries
Coroner	66,535.57	Autopsies and Additional Wages

Balanced Budget (0.00)

COUNTY OF BEDFORD	Previous Year Adopted	Current Year Adopted	Difference
2022 Proposed Budget		2021	2022
3100 - TAX REVENUE	12,126,460	12,615,782	
REAL ESTATE TAXES			
ASSESSMENT	3,261,911,178	3,259,404,702	
x TAX RATE	3.7250	3.8810	
GROSS LEVY	12,150,619	12,649,750	
LESS: (DISCOUNTS)	243,012	252,995	
(UNCOLLECTIBLES)	814,091	847,533	
31110 REAL ESTATE TAXES - CURRENT	11,093,515	11,549,221	
31120 REAL ESTATE TAXES - PRIOR	725,000	755,000	
TOTAL REAL ESTATE TAXES	11,818,515	12,304,221	485,706
PER CAPITA TAXES			
TAXABLES			
x TAX RATE			
GROSS LEVY			
LESS: (DISCOUNTS)			
(UNCOLLECTIBLES)			
PER CAPITA TAXES - CURRENT	122,445	115,000	(7,445)
PER CAPITA TAXES - PRIOR	18,500	18,900	400
TOTAL PER CAPITA TAXES	140,945	133,900	(7,045)
31310 INTERIM TAXES	26,000	32,661	6,661
31900 PENALTIES & INTEREST	141,000	145,000	4,000

COUNTY OF BEDFORD		Previous Year Adopted	Current Year Adopted	Difference
2022 Proposed Budget		2021	2022	
3200 - LICENSES & PERMITS				
3200	Licenses & Permits	0	0	
3300 - INTERGOVERNMENTAL REVENUE		5,363,616	5,260,977	(102,639)
33110	Title IV -E	906,318	1,177,186	270,868
33111	Independent Living	279,688	264,565	(15,123)
33112	Medicaid	1,224	1,164	(60)
33113	PACWIS GRANT	-	94,469	94,469
33120	Title XX	36,523	36,523	-
33121	Title IV - A/TANF Emergency Assistance	42,786	42,786	-
33130	Title IV - B	35,399	35,399	-
33210	Child Welfare - State ACT 148	3,184,641	2,740,176	(444,465)
33211	Other Grants	280,000	197,734	(82,266)
33114	ITG Grant	54,345	138,344	83,999
33222	Veteran Grant	-	-	-
33250	PA Court Administration	90,000	90,000	-
33270	Civil Defense	59,803	58,369	(1,434)
33271	EMA Planning & Training Grant	-	-	-
33282	State Game Lands DER	125,000	125,000	-
33212	PCCD Developing Strenght	15,000	-	(15,000)
33293	Probation Grant	70,000	66,012	(3,988)
33294	DA Salary Grant	116,000	118,000	2,000
33296	Hazrd Mitigation	30,000	41,250	11,250
33298	Domestic Violence Grant	36,889	24,000	(12,889)
33300	Drug Task force	-	10,000	10,000
33295	JPS USDA Language Intrepretor HAVA52K	110,000	-	(110,000)
3400 - CHARGES FOR SERVICES		2,466,768	2,305,228	(161,540)
34130	Sale of Maps	30,000	35,000	5,000
34140	Elections	500	500	-
34150	Register & Recorder	195,000	210,000	15,000
34170	Tax Claims	343,000	404,065	61,065
34180	Treasurer	40,000	40,000	-
34210	Prothonotary	200,000	120,000	(80,000)
34251	District Justice - Schellsburg	74,000	39,000	(35,000)
34252	District Justice - Bedford	74,000	63,000	(11,000)
34253	District Justice - Hopewell	21,000	12,000	(9,000)
34254	District Justice - Everett	225,000	163,000	(62,000)
34255	Transcript Fees	-	6,500	6,500
34260	Sheriff	100,000	90,000	(10,000)
34271	Domestic Relations	400,000	400,000	-
34272	DRO IV-D DA Reimbursement	-	-	-
34430	Jail	50,000	30,000	(20,000)
34431	Jail - Housing State Inmates	600,000	580,000	(20,000)
34440	Communications 911 Funding-Used for Bo	-	-	-
34620	Children & Youth	30,000	12,119	(17,881)
34621	SCDU Payments	84,268	100,044	15,776
AOPC				

COUNTY OF BEDFORD		Previous Year Adopted	Current Year Adopted	
2022 Proposed Budget		2021	2022	Variance
3500 - FINES & FORFEITS		559,000	710,000	151,000
35100 Fines		350,000	470,000	120,000
35101 Supervision Funds (State)		170,000	200,000	30,000
35102 Supervision Funds (Local)		39,000	40,000	1,000
35103 Supervisory Funds ti General Fund for addl wage				-
				-
3600 - MISCELLANEOUS REVENUES		211,225	118,062	(93,163)
36100 Interest		35,000	7,000	(28,000)
36200 Rent		29,225	22,062	(7,163)
36920 Parking Garage Grants		-	-	-
36930 Copies				-
36940 Miscellaneous Includes STOP		112,000	89,000	(23,000)
36950 Transcript Fee Reimbursement		10,000	-	(10,000)
36960 Retirement Reimbursement		25,000	-	(25,000)
				-
3900 - Other Financing Sources		2,008,600	387,600	(1,621,000)
39200 Interfund Transfers		-	375,500	375,500
39300 Intergovernmental Transfers				-
39400 Proceeds from Temporary Loan		1,995,000	-	(1,995,000)
39402 Financing for lease Jury System Phone Sys		-	-	-
39700 Clean & Green Filing Fee Revenue		6,000	5,000	(1,000)
39800 Planning Development Review Fees		7,600	6,300	(1,300)
39801 GIS Fees		-	800	800
				-
				-
SUMMARY				
1100 Cash (Beginning Balance)		997,947	-	(997,947)
3100 Taxes		12,126,460	12,615,782	489,322
3200 Licenses & Permits		-	-	-
3300 Intergovernmental Revenues		5,363,616	5,260,977	(102,639)
3400 Charges for Services		2,466,768	2,305,228	(161,540)
3500 Fines & Forfeits		559,000	710,000	151,000
3600 Miscellaneous Revenues		211,225	118,062	(93,163)
3900 Other Financing Sources		2,008,600	387,600	(1,621,000)
Covid Relief Funds		-	-	-
Total Available for Appropriation		23,733,616	21,397,649	(2,335,967)

COUNTY OF BEDFORD		Previous Year Adopted	Current Year Adopted	Variance
		2021	2022	
4111	COMMISSIONERS	260,098	270,645	10,547
4120	ELECTIONS	262,121	250,539	(11,582)
4132	ACCOUNTING	153,510	219,993	66,483
4133	AUDITORS	103,364	105,871	2,507
4136	TAX ASSESSMENT	289,756	313,396	23,640
4137	TAX COLLECTORS	145,800	153,200	7,400
4138	HUMAN RESOURCES	53,868	241,086	187,218
4139	TREASURER	92,601	100,511	7,910
4151	Solicitor	60,000	57,000	(3,000)
4152	PUBLIC DEFENDER	261,998	295,127	33,129
4171	PLANNING	224,590	200,639	(23,951)
4172	GIS	-	65,414	65,414
4174	MAINTENANCE	405,205	561,287	156,082
4176	COUNTY TELEPHONE SYSTEM	44,000	64,000	20,000
4179	VETERANS' AFFAIRS	90,587	104,694	14,107
TOTAL - GENERAL GOVERNMENT/LEGIS.		2,447,498	3,003,402	555,904

COUNTY OF BEDFORD		Previous Year	Current Year	Variance
		Adopted	Adopted	
		2021	2022	
4180	DISTRICT JUSTICE SCHELLSBURG	76,405	92,577	16,172
4181	DISTRICT JUSTICE BEDFORD	68,442	76,576	8,134
4182	DISTRICT JUSTICE HOPEWELL	46,627	58,879	12,252
4183	DISTRICT JUSTICE EVERETT	156,860	174,913	18,053
4184	COURTS	320,430	362,422	41,992
4187	DOMESTIC RELATIONS	372,157	464,293	92,136
4188	LAW LIBRARY	25,000	25,000	-
4191	CONSTABLES	11,000	14,600	3,600
4192	Coroner	118,887	216,455	97,568
4193	DISTRICT ATTORNEY	442,009	467,333	25,324
4194	PROTHONOTARY	260,844	288,211	27,367
4195	REGISTER & RECORDER See Note Below	182,427	168,612	(13,815)
4196	SHERIFF	567,936	734,637	166,701
TOTAL - GENERAL GOVERNMENT/JUDICIAL		2,649,024	3,144,508	495,484
*Register Recorder has archive employee included in budget				

COUNTY OF BEDFORD		Previous Year Adopted	Current Year Adopted	Variance
		2021	2022	
4410	AREA AGENCY ON AGING	33,062	33,064	2
4420	CHILDREN & YOUTH - GENERAL SUPERVISION	1,626,177	2,025,373	399,196
4421	CHILDREN IN FOSTER FAMILY HOMES	751,408	871,569	120,161
4423	CHILDREN IN SUPER. OF PRIVATE AGENCIES	687,034	557,545	(129,489)
4424	DEPENDENT CHILDREN IN PRIV. INSTITUTIONS	194,985	436,951	241,966
4425	CHILDREN IN OWN HOMES	877,075	811,407	(65,668)
4470	MH/MR	127,137	130,951	3,814
4491	LMA - DAY CARE	-	-	-
4495		-	-	-
4496	HUMAN SERVICES DEVELOPMENT FUND	-	-	-
4498	COMMUNITY SERVICES BLOCK GRANT	-	-	-
TOTAL - HUMAN SERVICES		4,296,878	4,866,860	569,982

COUNTY OF BEDFORD		Previous Year Adopted	Current Year Adopted	Variance
		2020	2022	
4610	CONSERVATION DISTRICT	93,000	93,000	-
4650	ECONOMIC DEVELOPMENT	120,000	120,000	-
TOTAL - CONSERVATION & ECON. DEV.		213,000	213,000	-

COUNTY OF BEDFORD		Previous Year Adopted	Current Year Adopted	Variance
		2021	2022	
PRINCIPAL				
4710 2.3	TAX ANTICIPATION NOTE	1,995,000	-	(1,995,000)
4710 2.4	LONG TERM DEBT	1,145,000	1,580,000	435,000
4710 2.5	9-1-1 BOND SHARE OF BOND	(129,000)	(148,221)	(19,221)
4710 2.6	COLLEGE BOND	-	-	-
	Less Debt refinance	-	-	-
TOTAL - DEBT PRINCIPAL		1,016,000	1,431,779	415,779
INTEREST				
4720 2.3	TAX ANTICIPATION NOTE	25,000	25,000	-
4720 2.4	LONG TERM DEBT	1,091,492	1,109,269	17,777
4720 2.11	OTHER			-
TOTAL - DEBT INTEREST		1,116,492	1,134,269	17,777
TOTAL - DEBT SERVICE		2,132,492	2,566,048	433,556

COUNTY OF BEDFORD		Previous Year Adopted	Current Year Adopted	Variance
		2021	2022	
4874	INSURANCE (OTHER THAN HEALTH INSUR.)			
	INSURANCE (OTHER THAN HEALTH)	498,051	527,972	29,921
	MEDICAL INSURANCE	1,950,000	1,420,682	(529,318)
	HRA PORTION	115,000	115,000	-
	HEALTH SAVINGS ACCOUNT-EMPLOYER	55,000	55,000	-
	Health Insurance Other Funding 911	(150,000)	(15,000)	135,000
4884	AGRICULTURE EXTENSION	70,589	70,589	0
4885	SOUTHERN ALLEGHENIES TOURISM			-
4886	SOUTHERN ALLEGHENIES PLANNING	3,946	3,946	-
4887	College	50,000	60,000	10,000
4889	CAPITAL PURCHASES	30,000	-	(30,000)
4890	POSTAGE METER	5,600	6,000	400
4891	COPIER	1,600	3,000	1,400
4895	DONATIONS	5,250	5,250	-
	FAIR ASSOCIATION	1,500	1,500	-
	PIONEER HISTORICAL SOCIETY	500	500	-
	HUMANE SOCIETY	500	500	-
	SAFETY & WELLNESS COMMITTEE	250	250	-
	SAMA	1,500	1,500	-
	BEDFORD FIRE COMPANY	1,000	1,000	-
4896	BEDFORD COUNTY FIREMAN'S ASSOC.	2,000	2,000	-
4897	MISCELLANEOUS	20,000	20,000	-
4898	MAINTENANCE CONTRACTS			-
4899	Lease for Phone and Juror System	35,000	-	(35,000)
4899.2111	RETIREMENT SYSTEM OPERATING EXPENSES	25,000	25,000	-
4899.2101	COUNTY APPROPRIATION TO RETIRMENT FUND	525,000	1,000,000	475,000
4899.4				-
4899.6				-
4899.2117	INDEPENDENT AUDITING	59,000	46,000	(13,000)

COUNTY OF BEDFORD	Previous Year Adopted	Current Year Adopted	Variance
	2021	2022	
4899.2118 DOMESTIC RELATIONS - BASE RATE	65,000	-	(65,000)
4899.9 AIRPORT DONATION		80,000	80,000
4899.10			-
4899.2109 FARMLAND PRESERVATION	1,000	-	(1,000)
4899.12			-
4899.2107 STOP GRANT MATCH	20,000	-	(20,000)
4899.2125 PSI - ACT 198 FUNDS and DUI Funds	40,000	40,000	-
4899.2126 TECHNOLOGY CONSULTANTS	130,000	291,798	161,798
	-	-	-
	-	-	-
Office 365 all expense	57,379	-	(57,379)
	-	-	-
Susquehanna Consulting	20,000	-	(20,000)
	-	-	-
	-	-	-
	-	-	-
TOTAL - MISCELLANEOUS	3,634,415	3,757,237	122,822

Account	Description	2019 <u>ACTUALS</u>	2020 <u>ACTUALS</u>	6/30/2021 YTD <u>ACTUALS</u>	2021 <u>BUDGET</u>	2022 BUDGET <u>REQUEST</u>	COMMENT <u>Budget Variance</u>
Commissioners							
1010	COMMISSIONERS SALARY	170,574.78	169,051.05	79,780.49	172,428.00	176,742.00	4,314.00
1020	PROFESSIONAL STAFF	24,979.19	29,751.01	18,043.84	40,000.00	40,996.00	996.00
1030	CLERICAL SALARIES	576.00	1,092.00	1,361.49	-	-	-
1040	WAGES	(0.01)	367.68	-	-	-	-
1050	FRINGE BENEFITS	15,451.67	15,490.04	8,352.91	15,800.00	16,656.96	856.96
2010	ADVERTISING	827.17	848.32	319.81	1,200.00	1,200.00	-
2020	TELEPHONE & POSTAGE	981.91	323.44	8.21	450.00	450.00	-
2030	TRAVELING EXPENSES	5,710.25	5,870.82	572.98	9,000.00	9,000.00	-
2050	ASSOC DUES & EXPENSES	17,200.00	18,865.00	200.00	17,870.00	17,900.00	30.00
2070	CONTRACTED COMPUTER SERVICES	-	-	3,649.96	-	3,700.00	3,700.00
2110	OTHER	835.24	523.20	1,071.19	850.00	1,500.00	650.00
3010	MATERIALS & SUPPLIES	3,017.44	3,800.02	270.70	2,500.00	2,500.00	-
4010	CAPITAL OUTLAY	-	-	-	-	-	-
Commissioners		240,153.64	245,982.58	113,631.58	260,098.00	270,644.96	10,546.96

Account	Description	2019 <u>ACTUALS</u>	2020 <u>ACTUALS</u>	6/30/2021 YTD <u>ACTUALS</u>	2021 <u>BUDGET</u>	2022 BUDGET <u>REQUEST</u>	COMMENT <u>Budget Variance</u>
Elections							-
1010	SALARY OF REGISTRARS	-	-	-	-	-	-
1020	SALARIES OF PROF STAFF	8,819.31	10,299.24	4,232.35	26,561.00	10,000.00	(16,561.00)
1030	ELECTIONS STAFF	26,112.35	30,644.45	12,958.88	10,200.00	29,795.00	19,595.00
1040	WAGES - ELECTION OFFICERS	35,801.18	48,806.95	27,921.40	60,000.00	60,000.00	-
1050	FRINGE BENEFITS	2,571.70	4,001.78	1,903.00	2,310.00	3,044.32	734.32
2010	ADVERTISING	2,873.01	2,737.67	1,464.62	4,000.00	4,500.00	500.00
2020	TELEPHONE & POSTAGE	3,464.38	13,059.91	216.26	62,500.00	16,000.00	(46,500.00)
2030	TRAVEL EXPENSES	263.58	676.74	623.73	250.00	700.00	450.00
2050	ASSOC DUES & EXPENSES	637.36	344.35	-	-	-	-
2080	CONTRACTED MAINT & REPAIR	29,334.01	-	-	45,500.00	45,000.00	(500.00)
2100	TRAINING	-	-	-	3,000.00	3,000.00	-
2110	OTHER	299.49	12,520.09	3,205.33	1,300.00	3,500.00	2,200.00
3010	MATERIALS & SUPPLIES	46,061.13	63,290.15	74,089.62	46,500.00	75,000.00	28,500.00
Elections		156,237.50	186,381.33	126,615.19	262,121.00	250,539.32	(11,581.68)

Account	Description	2019 <u>ACTUALS</u>	2020 <u>ACTUALS</u>	6/30/2021 YTD <u>ACTUALS</u>	2021 <u>BUDGET</u>	2022 BUDGET <u>REQUEST</u>	COMMENT <u>Budget Variance</u>
Accounting							-
1010	DIRECTOR	70,163.01	84,754.71	49,869.42	81,970.00	-	(81,970.00)
1020	SALARIES OF PROF STAFF	52,815.06	57,397.30	36,269.40	46,195.00	53,907.00	7,712.00
1030	ACCOUNTING CLERICAL	-	495.96	22,818.51	-	36,393.00	36,393.00
1050	FRINGE BENEFITS	9,426.66	12,620.86	7,973.69	10,845.00	6,907.95	(3,937.05)
2020	TELEPHONE & POSTAGE	1,917.36	2,221.45	440.12	2,400.00	2,400.00	-
2030	TRAVEL EXPENSE	177.79	14.15	60.00	800.00	8,985.00	8,185.00
2080	CONTRACTED MAINT. & REPAIR	19,522.37	16,494.80	42,814.46	27,500.00	107,500.00	80,000.00
2110	OTHER	6,981.97	2,128.32	-	-	-	-
3010	MATERIALS & SUPPLIES	2,553.14	3,896.23	2,356.90	3,800.00	3,900.00	100.00
4010	CAPTIAL OUTLAY	-	-	-	-	-	-
Accounting		163,557.36	180,023.78	162,602.50	173,510.00	219,992.95	46,482.95

Account	Description	2019 <u>ACTUALS</u>	2020 <u>ACTUALS</u>	6/30/2021 YTD <u>ACTUALS</u>	2021 <u>BUDGET</u>	2022 BUDGET <u>REQUEST</u>	COMMENT <u>Budget Variance</u>
Auditors							-
1010	DIRECTOR	80,377.00	81,203.20	37,272.24	-	27,592.00	27,592.00
1020	SALARIES OF PROF STAFF	500.00	500.00	500.00	500.00	500.00	-
1040	WAGES OF AUDITORS	-	-	35.98	83,857.00	55,184.00	(28,673.00)
1050	FRINGE BENEFITS	5,806.96	6,063.34	2,725.43	6,300.00	6,332.36	32.36
2010	ADVERTISING	296.52	302.52	233.98	250.00	200.00	(50.00)
2020	TELEPHONE & POSTAGE	13.99	16.90	-	20.00	20.00	-
2030	TRAVELING EXPENSES	5,348.00	7,875.15	4,556.32	11,337.00	14,943.00	3,606.00
2050	ASSOC DUES & EXPENSES	500.00	500.00	500.00	500.00	500.00	-
2110	OTHER	-	-	816.21	300.00	300.00	-
3010	MATERIALS & SUPPLIES	706.22	172.01	166.04	300.00	300.00	-
Auditors		93,548.69	96,633.12	46,806.20	103,364.00	105,871.36	2,507.36

Account	Description	2019 <u>ACTUALS</u>	2020 <u>ACTUALS</u>	6/30/2021 YTD <u>ACTUALS</u>	2021 <u>BUDGET</u>	2022 BUDGET <u>REQUEST</u>	COMMENT <u>Budget Variance</u>
							-
Human Resources							-
1010	DIRECTOR				53,868.00	51,975.00	(1,893.00)
1020	SALARIES OF PROF STAFF					35,880.00	35,880.00
1030	ACCOUNTING CLERICAL					-	-
1050	FRINGE BENEFITS					6,720.91	6,720.91
2020	TELEPHONE & POSTAGE					673.00	673.00
2030	TRAVEL EXPENSE					576.00	576.00
2080	CONTRACTED MAINT. & REPAIR					-	-
2110	OTHER					3,993.00	3,993.00
3010	MATERIALS & SUPPLIES					5,268.00	5,268.00
4010	CAPTIAL OUTLAY	-	-	-	-	136,000.00	136,000.00
							-
Human Resources		-	-	-	53,868.00	241,085.91	187,217.91

Account	Description	2019 <u>ACTUALS</u>	2020 <u>ACTUALS</u>	6/30/2021 YTD <u>ACTUALS</u>	2021 <u>BUDGET</u>	2022 BUDGET <u>REQUEST</u>	COMMENT <u>Budget Variance</u>
TAX Collectors							-
1041	Commissions	100,995.30	102,375.54	97,756.48	-	115,200.00	115,200.00
1050	COMMISSIONS	8,470.04	7,847.62	7,547.82	121,000.00	9,000.00	(112,000.00)
2040	PREMIUMS ON BONDS	4,157.81	5,386.87	4,943.93	5,800.00	6,000.00	200.00
3010	MATERIALS & SUPPLIES	20,016.73	20,541.76	22,422.58	19,000.00	23,000.00	4,000.00
TAX Collectors		133,639.88	136,151.79	132,670.81	145,800.00	153,200.00	7,400.00

Account	Description	2019 <u>ACTUALS</u>	2020 <u>ACTUALS</u>	6/30/2021 YTD <u>ACTUALS</u>	2021 <u>BUDGET</u>	2022 BUDGET <u>REQUEST</u>	COMMENT <u>Budget Variance</u>
Tax Claims							-
1010	SALARY - PROG DIRECTOR	-	-	12,275.78	46,920.00	6,600.00	(40,320.00)
1020	SALARIES OF PROF STAFF	-	-	12,000.00	-		-
1050	FRINGE BENEFITS	-	-	1,253.48	500.00	504.90	4.90
2010	ADVERTISING					7,500.00	7,500.00
2020	TELEPHONE & POSTAGE	-	48.25	-	800.00	53,500.00	52,700.00
2030	TRAVELING EXPENSES	-	-	-	2,500.00	1,000.00	(1,500.00)
2050	ASSOC DUES & EXPENSES	-	-	835.00	-	300.00	300.00
2070	CONTRACTED COMPUTER SERVICES	-	487.64	-	-	21,000.00	21,000.00
2080	CONTRACTED MAINT & REPAIR	-	-	-	2,148.00		-
3010	MATERIALS & SUPPLIES	-	12.99	945.99	1,000.00	1,150.00	150.00
Tax Claims		-	548.88	27,310.25	53,868.00	91,554.90	37,686.90

Account	Description	2019 <u>ACTUALS</u>	2020 <u>ACTUALS</u>	6/30/2021 YTD <u>ACTUALS</u>	2021 <u>BUDGET</u>	2022 BUDGET <u>REQUEST</u>	COMMENT <u>Budget Variance</u>
							-
Treasurer							-
1010	SALARY - PROG DIRECTOR	50,902.83	50,566.41	23,805.12	51,577.00	52,867.00	1,290.00
1020	SALARIES - PROF STAFF	-	500.00	-	500.00	500.00	-
1030	SALARIES OF CLERICAL STAF	21,655.20	23,400.82	11,845.92	25,714.00	26,357.00	643.00
1040	WAGES - EXTRA HELP	230.19	12.25	-	-	1,000.00	1,000.00
1050	FRINGE BENEFITS	5,917.60	6,129.97	3,188.36	6,100.00	6,137.14	37.14
2020	TELEPHONE & POSTAGE	4,482.07	3,844.55	991.95	1,350.00	3,000.00	1,650.00
2030	TRAVELING EXPENSES	293.44	-	-	460.00	500.00	40.00
2040	PREMIUMS ON BONDS	-	-	-	2,500.00	2,500.00	-
2050	ASSOC DUES & EXPENSES	2,200.00	2,367.00	625.00	-	2,500.00	2,500.00
2070	CONTRACTED COMPUTER SERVICES	1,500.00	1,500.00	1,500.00	1,750.00	1,750.00	-
2080	CONTRACTED MAINT. & REPAIR	271.27	556.03	256.10	400.00	400.00	-
2110	OTHER	1,170.89	1,571.64	500.00	250.00	1,000.00	750.00
3010	MATERIALS & SUPPLIES	3,653.07	1,396.94	46.72	2,000.00	2,000.00	-
							-
Treasurer		92,276.56	91,845.61	42,759.17	92,601.00	100,511.14	7,910.14

Account	Description	2019 <u>ACTUALS</u>	2020 <u>ACTUALS</u>	6/30/2021 YTD <u>ACTUALS</u>	2021 <u>BUDGET</u>	2022 BUDGET <u>REQUEST</u>	COMMENT <u>Budget Variance</u>
Solicitor							-
1020	SALARIES OF PROF STAFF	38,426.36	80,157.56	14,353.50	60,000.00	45,000.00	(15,000.00)
2110	OTHER	834.00	10,000.00	9,000.00	-	12,000.00	12,000.00
Solicitor							-
		39,260.36	90,157.56	23,353.50	60,000.00	57,000.00	(3,000.00)

Account	Description	2019 <u>ACTUALS</u>	2020 <u>ACTUALS</u>	6/30/2021 YTD <u>ACTUALS</u>	2021 <u>BUDGET</u>	2022 BUDGET <u>REQUEST</u>	COMMENT <u>Budget Variance</u>
Planning							-
1010	DIRECTOR	70,712.31	55,710.96	24,504.70	55,323.00	56,492.00	1,169.00
1020	SALARIES OF PROF STAFF	(1,856.00)	581.71	1,037.02	105,749.00	-	(105,749.00)
1030	SALARIES OF NON PROFESSIONAL	66,976.64	82,020.19	54,888.53	-	88,551.00	88,551.00
1050	FRINGE BENEFITS	10,021.86	8,705.56	7,695.07	15,268.00	11,095.79	(4,172.21)
2010	ADVERTISING	358.48	707.90	25.71	1,000.00	800.00	(200.00)
2020	TELEPHONE & POSTAGE	774.05	1,264.41	140.39	1,000.00	800.00	(200.00)
2030	TRAVEL EXPENSES	1,949.86	577.81	53.44	2,500.00	2,000.00	(500.00)
2050	ASSOC DUES & EXPENSES	577.00	589.00	824.00	600.00	600.00	-
2070	CONTRACTED COMPUTER SERVICES	8,150.00	1,399.62	4,100.00	4,200.00	-	(4,200.00)
2080	CONTRACTED MAINT. & REPAIR	4,160.07	5,041.89	2,728.56	4,600.00	2,400.00	(2,200.00)
2090	SOLID WASTE PLAN	2,396.87	-	-	30,000.00	35,000.00	5,000.00
2100	AG PRES. BOARD CONTRIBUT.	-	-	-	1,000.00	-	(1,000.00)
2110	OTHER	474.71	599.83	529.32	250.00	400.00	150.00
3010	MATERIALS & SUPPLIES	2,116.31	1,575.24	282.70	2,100.00	1,500.00	(600.00)
4010	CAPITAL OUTLAY	-	-	-	1,000.00	1,000.00	-
Planning		166,812.16	158,774.12	96,809.44	224,590.00	200,638.79	(23,951.21)

Account	Description	2019 <u>ACTUALS</u>	2020 <u>ACTUALS</u>	6/30/2021 YTD <u>ACTUALS</u>	2021 <u>BUDGET</u>	2022 BUDGET <u>REQUEST</u>	COMMENT <u>Budget Variance</u>
							-
GIS							-
	1010 DIRECTOR				-	46,125.00	46,125.00
	1020 SALARIES OF PROF STAFF				-	-	-
	1030 SALARIES OF NON PROFESSIONAL				-	-	-
	1050 FRINGE BENEFITS				-	3,528.56	3,528.56
	2010 ADVERTISING				-	-	-
	2020 TELEPHONE & POSTAGE				-	200.00	200.00
	2030 TRAVEL EXPENSES				-	1,000.00	1,000.00
	2050 ASSOC DUES & EXPENSES				-	200.00	200.00
	2070 CONTRACTED COMPUTER SERVICES				-	8,200.00	8,200.00
	2080 CONTRACTED MAINT. & REPAIR				-	2,160.00	2,160.00
	2110 OTHER				-	-	-
	3010 MATERIALS & SUPPLIES				-	3,000.00	3,000.00
	4010 CAPITAL OUTLAY				-	1,000.00	1,000.00
							-
GIS					-	65,413.56	65,413.56

Account	Description	2019 <u>ACTUALS</u>	2020 <u>ACTUALS</u>	6/30/2021 YTD <u>ACTUALS</u>	2021 <u>BUDGET</u>	2022 BUDGET <u>REQUEST</u>	COMMENT <u>Budget Variance</u>
							-
Maintenance							-
1010	SALARY OF PROG DIRECTOR	48,786.18	40,664.98	17,407.37	40,800.00	41,808.00	1,008.00
1030	SALARIES OF MAINT WORKERS	62,111.28	73,054.53	42,257.29	81,289.00	87,581.00	6,292.00
1040	WAGES	390.50	933.15	64.00	(15,000.00)		15,000.00
1050	FRINGE BENEFITS	8,739.32	10,498.33	6,724.62	10,916.00	9,898.26	(1,017.74)
2030	TRAVEL EXPENSES	(733.78)	-	846.75	-		-
2060	UTILITIES	133,761.20	132,855.16	68,023.60	140,000.00	140,000.00	-
2080	CONTRACTED MAINT & REPAIR	83,177.58	70,215.43	79,656.24	90,000.00	90,000.00	-
2090	UNIFORM ALLOWANCE	4,195.87	168.99	1,585.00	4,000.00	4,000.00	-
2100	TRASH REMOVAL	7,595.00	9,420.00	3,145.00	10,200.00	10,000.00	(200.00)
2110	OTHER	1,992.40	11,459.77	12,172.70	8,000.00	10,000.00	2,000.00
3010	MATERIALS & SUPPLIES	25,688.00	63,023.11	38,568.67	35,000.00	38,000.00	3,000.00
4010	CAPITAL OUTLAY	6,998.95	18,636.70	216.00	-	130,000.00	130,000.00
							-
Maintenance		382,702.50	430,930.15	270,667.24	405,205.00	561,287.26	156,082.26